



Product Specification
Getinge Elmasonic Med
Ultrasonic cleaning units

Getinge Elmasonic Med Ultrasonic cleaning units

Product Details

Application

Designed for the medical sector for cleaning of surgical instruments, and of micro instruments. In dental applications for cleaning of instruments, removal of cement and plaster, cleaning of dental mould spoons, drills and prostheses as well as cleaning of dentures, crowns.

Standards and Codes

The unit is classified as a class I medical device in line with the EU Medical Device Regulation 2017/745. Only original accessories manufactured for the unit are permitted to be used.

- ELMA Schmidbauer DIN EN ISO 13485

Testing and Documentation

The Getinge Elmasonic Med ultrasonic cleaners have been tested according to Getinge demands. Operating instructions and technical information are included in the delivery. For optimal cleaning results, we recommend to use our Getinge Elmasonic Med with the Getinge Clean detergent range and Getinge Assured Indicators.

Product description

The range of Getinge Elmasonic Med ultrasonic cleaning units are free-standing bench models with built-in stainless steel tank and are available in six different models, from 6 liters to 90 liters. Ultrasonic cleaning makes it possible to clean intricate parts with little or no disassembly, because ultrasound will clean wherever the cleaning liquid gets in contact with a surface.

- 37 kHz ultrasonic frequency (control range -2,5/+5,5 kHz)
- 5 ultrasonic modes for need-based sound field distribution in the ultrasonic bath
 - eco-mode: Gentle cleaning with quieter operation by running the sweep-mode at a slightly lower intensity
 - sweep-mode: Even cleaning through even sound field distribution in the ultrasonic bath
 - pulse-mode: Removal of even stubborn contamination through pulsating sound field distribution
 - dynamic-mode: Combination of the ultrasonic modes sweep and pulse in order to increase the cleaning performance
 - degas-mode: Quick degassing of the cleaning liquid and for special applications in the laboratory
- 4 memory locations for cleaning programs, available via quick selection

Note! Pre-cleaning medical products does not replace subsequent cleaning, disinfection or sterilisation using automated standard processes, e.g. washer-disinfectors or autoclaves.

Key features

- Autostart function for temperature-controlled start of cleaning
 - Adjustable limit temperature from 40-60 °C (can be switched to °F)
 - Digital control unit with wipeable membrane keyboard and easy-to-read display for displaying all operating states
 - 5 ultrasonic modes for need-based sound field distribution in the ultrasonic bath
 - Optical and acoustic feedback, e.g. at the end of cleaning or when the limit temperature is reached
 - Pre-selection of cleaning time: cleaning time adjustable between 1 minute and 6 hours
 - Electronic temperature control adjustable in steps of 5 °C from 25-80 °C (can be switched to °F; temperature tolerance -5/+8 °C)
 - Setup menu for individual adjustment of the device functions
 - Dry run protection (except for Elmasonic Med 500 and 900)
 - Automatic safety shutdown after 8 hours
-

Included in the delivery

- Elmasonic Basket
- Elmasonic Lid
- Power cable with rubber connector (2 m length, EU plug F)
- User Manual

Optional Power Cable for the Getinge Elmasonic 60-300

Article No	Article name	Plug type
6003001230	Power cable EU	Type F
6003000185	Power cable UK	Type G
6003000187	Power cable Switzerland	Type J
6003000188	Power cable Australia	Type I
6003000189	Power cable USA	Type B
6003001231	Power cable China	Type A
6003001232	Power cable Brazil	Type N

Optional Power Cable for the Getinge Elmasonic 500 and 900

Article No	Article name	Plug type
6003001233	Power cable EU	Type F
6003001234	Power cable UK	Type G
6003001235	Power cable Switzerland	Type J
6003001236	Power cable Australia	Type I
6003001237	Power cable USA	Type B
6003001238	Power cable China	Type A
6003001239	Power cable Brazil	Type N

	Elmasonic Med 60	Elmasonic Med 180	Elmasonic Med 200	Elmasonic Med 300
Sweep	Yes	Yes	Yes	Yes
Degas/Autodegas	Yes	Yes	Yes	Yes
Carrying handles	Yes	Yes	Yes	Yes
Drain connection thread	9.52 mm (0.38 in)	9.52 mm (0.38 in)	9.52 mm (0.38 in)	9.52 mm (0.38 in)
CE compliant	Yes	Yes	Yes	Yes
Protection class	IP20	IP20	IP20	IP20
Wire mesh basket	Included	Included	Included	Included
Lid included	Polypropylene	Polypropylene	Polypropylene	Polypropylene
Optional Lid for two beakers, 2 rubber rings	6003000098	6003000098	6003000098	6003000098
Optional Beaker 600 ml	6003000097	6003000097	6003000097	6003000097
Optional Beaker 1000 ml	6003001228	6003001228	6003001228	6003001228

	Elmasonic Med 500	Elmasonic Med 500 with Noise protection cover	Elmasonic Med 900	Elmasonic Med 900 with Noise protection cover
Sweep	Yes	Yes	Yes	Yes
Degas/Autodegas	Yes	Yes	Yes	Yes
Carrying handles	Yes	Yes	Yes	Yes
Drain connection thread	19.05 mm (0.75 in)	19.05 mm (0.75 in)	19.05 mm (0.75 in)	19.05 mm (0.75 in)
CE compliant	Yes	Yes	Yes	Yes
Protection class	IP20	IP20	IP20	IP20
Wire mesh basket	Included	Included	Included	Included
Lid included	Stainless steel	Stainless steel	Stainless steel	Stainless steel
Optional Lid for two beakers, 2 rubber rings	NA	NA	NA	NA
Optional Beaker 600 ml	NA	NA	NA	NA
Optional Beaker 1000 ml	NA	NA	NA	NA

Getinge Elmasonic Med Ultrasonic cleaning units

Technical data

6003001200
Getinge Elmasonic Med 60



6003001201
Getinge Elmasonic Med 180



6003001202
Getinge Elmasonic Med 200



6003001203
Getinge Elmasonic Med 300



6003001204
Getinge Elmasonic Med 500



6003001226
Getinge Elmasonic Med 500 with
Noise protection cover

6003001205
Getinge Elmasonic Med 900

6003001227
Getinge Elmasonic Med 900 with
Noise protection cover



Outer dimensions

	Elmasonic Med 60	Elmasonic Med 180	Elmasonic Med 200	Elmasonic Med 300
Width	370 mm (28 47/64 in)	405 mm (15 15/16 in)	600 mm (23 5/8 in)	575 mm (22 41/64 in)
Depth	210 mm (8 17/64 in)	360 mm (14 11/64 in)	385 mm (15 5/32 in)	360 mm (14 11/64 in)
Height	275 mm (10 53/64 in)	330 mm (12 63/64 in)	280 mm (11 1/32 in)	330 mm (12 63/64 in)

	Elmasonic Med 500	Elmasonic Med 500 with Noise protection cover	Elmasonic Med 900	Elmasonic Med 900 with Noise protection cover
Width	770 mm (30 5/16 in)	770 mm (30 5/16 in)	870 mm (34 1/4 in)	870 mm (34 1/4 in)
Depth	425 mm (16 47/64 in)	510 mm (20 5/64 in)	595 mm (23 27/64 in)	640 mm (25 13/64 in)
Height	505 mm (19 7/8 in)	975 mm (38 25/68 in)	505 mm (19 7/8 in)	1145 mm (45 5/64 in)

Tank internal dimensions

	Elmasonic Med 60	Elmasonic Med 180	Elmasonic Med 200	Elmasonic Med 300
Width	275 mm (28 47/64 in)	300 mm (15 15/16 in)	505 mm (23 5/8 in)	475 mm (22 41/64 in)
Depth	125 mm (8 17/64 in)	270 mm (14 11/64 in)	300 mm (15 5/32 in)	270 mm (14 11/64 in)
Height	145 mm (10 53/64 in)	195 mm (12 63/64 in)	150 mm (11 1/32 in)	195 mm (12 63/64 in)

	Elmasonic Med 500	Elmasonic Med 500 with Noise protection cover	Elmasonic Med 900	Elmasonic Med 900 with Noise protection cover
Width	500 mm (19 11/16 in)	500 mm (19 11/64 in)	600 mm (23 5/18 in)	600 mm (23 5/18 in)
Depth	330 mm (12 63/64 in)	330 mm (12 63/64 in)	500 mm (19 5 11/64 in)	500 mm (19 5 11/64 in)
Height	290 mm (11 27/64 in)	290 mm (11 27/64 in)	285 mm (11 7/32 in)	285 mm (11 7/32 in)

Tank volume

Elmasonic Med 60	Elmasonic Med 180	Elmasonic Med 200	Elmasonic Med 300
4.3 l (1.13 gal.)	14.2 l (3.75 gal.)	18 l (4.7 gal.)	22 l (5.8 gal.)

Elmasonic Med 500	Elmasonic Med 500 with Noise protection cover	Elmasonic Med 900	Elmasonic Med 900 with Noise protection cover
40.3 l (10.6 gal.)	40.3 l (10.6 gal.)	63.7 l (16.82 gal.)	63.7 l (16.82 gal.)

Weight including cover

Elmasonic Med 60	Elmasonic Med 180	Elmasonic Med 200	Elmasonic Med 300
5.2 kg (11.47 lb)	10.2 kg (22.49 lb)	12.2 kg (26.90 lb)	12.2 kg (26.90 lb)

Elmasonic Med 500	Elmasonic Med 500 with Noise protection cover	Elmasonic Med 900	Elmasonic Med 900 with Noise protection cover
30.4 kg (67.02 lb)	34.7 kg (76.68 lb)	43.4 kg (95.68 lb)	49.3 kg (108.68 lb)

Power consumption

	Elmasonic Med 60	Elmasonic Med 180	Elmasonic Med 200	Elmasonic Med 300
Power consumption total	550 W	1000 W	1100 W	1500 W
Ultrasonic power effective	150 W	200 W	300 W	300 W
Ultrasonic peak performance max	*600 W	*800 W	*1200 W	*1200 W
Heating power	400 W	800 W	800 W	1200 W
	*Standard sinus wave modulation			

	Elmasonic Med 500	Elmasonic Med 500 with Noise protection cover	Elmasonic Med 900	Elmasonic Med 900 with Noise protection cover
Power consumption total	2140 W	2140 W	2960 W	2960 W
Ultrasonic power effective	540 W	540 W	960 W	960 W
Ultrasonic peak performance max	*2160 W	*2160 W	*3840 W	*3840 W
Heating power	1600 W	1600 W	2000 W	2000 W
	*Standard sinus wave modulation			

Temperature

	Elmasonic Med 60	Elmasonic Med 180	Elmasonic Med 200	Elmasonic Med 300
Target temperature	25–80°C (77–176°F)	25–80°C (77–176°F)	25–80°C (77–176 °F)	25–80°C (77–176°F)
Max temperature	80°C (176°F)	80°C (176°F)	80°C (176°F)	80°C (176°F)

	Elmasonic Med 500	Elmasonic Med 500 with Noise protection cover	Elmasonic Med 900	Elmasonic Med 900 with Noise protection cover
Target temperature	25–80°C (77–176°F)	25–80°C (77–176°F)	25–80°C (77–176°F)	25–80°C (77–176°F)
Max temperature	80°C (176°F)	80°C (176 °F)	80°C (176°F)	80°C (176°F)

Sound level

Elmasonic Med 60	Elmasonic Med 180	Elmasonic Med 200	Elmasonic Med 300
<80 dB	<80 dB	<80 dB	<80 dB

Sound pressure level LpAU. Measured sound pressure level with lid at a distance of 1 m.

Elmasonic Med 500	Elmasonic Med 500 with Noise protection cover	Elmasonic Med 900	Elmasonic Med 900 with Noise protection cover
<80 dB	<80 dB	<80 dB	<80 dB

Sound pressure level LpAU. Measured sound pressure level with lid at a distance of 1 m.

Accessories

Article No.	Description	Material	Loading wight	External size (L x W x H)
6003001212	Getinge Elmasonic Basket 60	Stainless steel 304	5 kg (11.02 lb)	255 x 115 x 75 mm (3 15/16 x 4 17/32 x 2 61/64 in)
6003001213	Getinge Elmasonic Basket 180	Stainless steel 304	8 kg (17.63 lb)	280 x 250 x 115 mm (11 1/132 x 9 27/32 x 4 17/32 in)
6003001214	Getinge Elmasonic Basket 200	Stainless steel 304	4 kg (8.81 lb)	490 x 255 x 95 mm (19 19/64 x 10 3/64 x 3 47/64 in)
6003001215	Getinge Elmasonic Basket 300	Stainless steel 304	10 kg (22 lb)	455 x 250 x 110 mm (17 29/32 x 9 27/32 x 4 21/64 in)
6003001216	Getinge Elmasonic Basket 500	Stainless steel 304	20 kg (44 lb)	460 x 300 x 195 mm (18 7/64 x 11 13/16 x 7 43/64 in)
6003001217	Getinge Elmasonic Basket 900	Stainless steel 304	30 kg (66.13 lb)	545 x 460 x 190 mm (21 29/64 x 18 7/64 x 7 31/64 in)
6003001218	Getinge Elmasonic Lid 60	Polypropylene		270 x 190 x 20 mm (10 5/18 x 7 31/64 x 0 25/32 in)
6003001219	Getinge Elmasonic Lid 180	Polypropylene		405 x 340 x 20 mm (15 15/15 x 13 25/64 x 0 25/32 in)
6003001220	Getinge Elmasonic Lid 200	Polypropylene		600 x 365 x 20 mm (23 5/8 x 14 3/18 x 0 25/32 in)
6003001221	Getinge Elmasonic Lid 300	Polypropylene		575 x 335 x 20 mm (22 41/64 x 13 3/16 x 0 25/32 in)
6003001222	Getinge Elmasonic Lid 500	Stainless steel 304		
6003001223	Getinge Elmasonic Lid 900	Stainless steel 304		
6003000098	Lid for two beakers, fits Getinge Elmasonic Med 60-300	Stainless steel 304		330 x 180 x 15 mm (12 63/64 x 7 3/32 x 0 19/32 in)
6003001224	Getinge Elmasonic Noise protection cover 500	Stainless steel 304		580 x 495 x 65 mm (22 53/64 x 19 31/64 x 2 9/16 in)
6003001225	Getinge Elmasonic Noise protection cover 900	Stainless steel 304		680 x 665 x 65 mm (26 49/64 x 26 3/16 x 2 9/16 in)
6003000097	Beaker, 600 ml	Glass		110 x 135 x 125 mm (4 21/64 x 9 1/4 x 4 59/64 in)
6003001228	Beaker, 1000 ml	Glass		110 x 185 x 125 mm (4 21/64 x 7 9/32 x 4 59/64 in)

Baskets

All baskets are made of stainless steel (WNR. 1.4301) and with Rilsan-coated handles. The Basket for the Getinge Elmasonic 200 also serves as a holder for sterilization baskets.

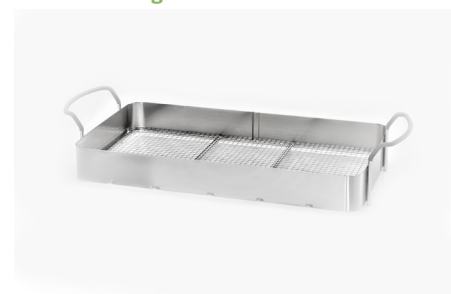
Getinge Elmasonic Med 60



Getinge Elmasonic Med 180



Getinge Elmasonic Med 200



Getinge Elmasonic Med 300



Getinge Elmasonic Med 500



Getinge Elmasonic Med 900



Lids

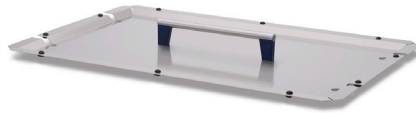
The Getinge Elmasonic Med 60-300 utilizes a polypropylene lid that also serves upside down as a practical drip tray for basket and cleaned parts. By collecting and returning evaporating water from the ultrasonic bath, energy and costs can be saved. In addition, the plastic covers reduce the noise of ultrasonic cleaning and thus ensure a more pleasant working noise level. Included with the unit.

The lids For the Getinge Elmasonic 500 and 900 is made of stainless steel by collecting and returning evaporating water from the ultrasonic bath, energy and costs can be saved. Included with the unit.

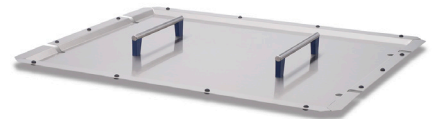
Getinge Elmasonic Lid 180-300



Getinge Elmasonic Lid 500



Getinge Elmasonic Lid 900



Holder for two beakers is made of stainless steel, to be placed on the ultrasonic cleaning device and holds two glasses/ Beakers.

**Holder for two beakers +
two rubber rings
Getinge Elmasonic Med 60-300**



Beaker, 600 ml



Beaker, 1000 ml



Noise protection cover

New for the Getinge Elmasonic we can offer noise protection covers. These covers are available for the device sizes 500 and 900 and are attached to the ultrasonic device. A noise protection cover can reduce the noise of ultrasonic cleaning by up to 54 %. At the same time, the cover retains process vapors and saves energy and costs by reducing waste heat and collecting/recirculating the water vapors.





Getinge is a global provider of innovative solutions for operating rooms, intensive care units, sterilization departments and for life science companies and institutions. Based on our firsthand experience and close partnerships with clinical experts, healthcare professionals and medtech specialists, we are improving the everyday life for people – today and tomorrow.

Legal Manufacturer:

Elma Schmidbauer GMBH · Gottlieb-Daimler-Str. 17 · 78224 Singen · Germany · +49 7731 882 236

Distributed by:

Getinge Disinfection AB · Ljungadalsgatan 11 · 352 46 Växjö · SWEDEN · +46 10 335 98 00

www.getinge.com