

A Soft Tissue Augmentation Innovation

Unlike traditional augment materials that are either synthetic or biologic, BioBrace[®] is a biocomposite of both. The proprietary architecture features a highly porous type-1 collagen matrix reinforced with bioresorbable PLLA microfilaments.

The Result?

Reinforces

Provides supplemental strength through load sharing ^{1,2}

Facilitates New Tissue Growth^{1,2}

Biologic scaffold facilitates and optimizes healing ^{1,2}

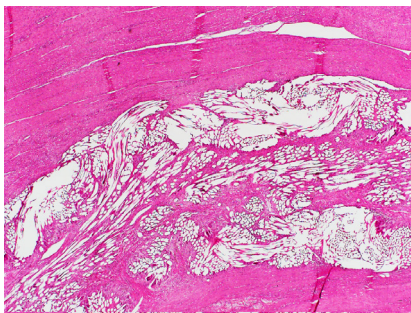
Resorbs

Supports tissue for ~ 2 years before naturally resorbing ^{1,2}

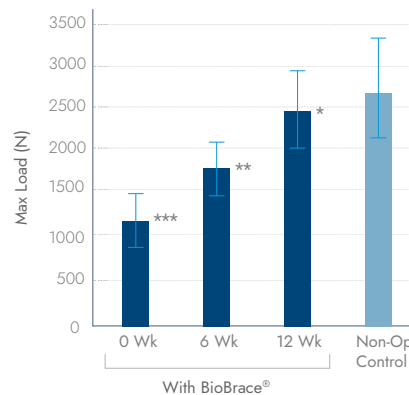
Providing Confidence in Healing

In preclinical animal testing, BioBrace[®] demonstrated robust results.^{1,2}

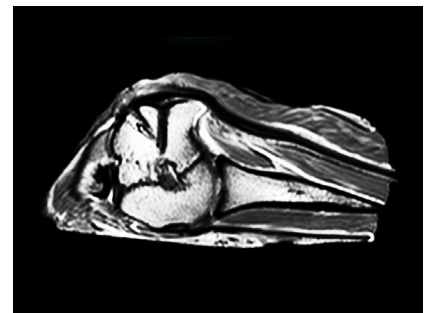
Rapid cellular infiltration and new tissue regeneration by 6 weeks ^{1,2}



Native tendon strength achieved within 12 weeks through augmentation ^{1,2}



180% thicker tendon vs non-operative control at 12 weeks ^{1,2}



¹ K203267 – 510(k) Clearance Letter - The BioBrace[®] Implant
² Based on preclinical animal data

Make BioBrace Part of Your Protocol



5mm x 250mm



23mm x 30mm

- Optimized to promote load sharing and healing
- Excellent handling and durability
- Off-the-shelf, ready when you need it

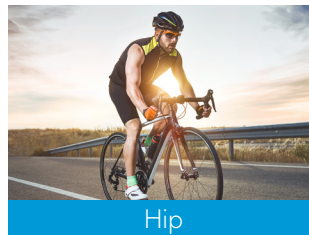
20+ Procedures and Counting!



Knee



Shoulder



Hip



Foot & Ankle

Ordering Information

Description	Catalog Number
BioBrace® 23mm x 30mm	BB23X30
BioBrace® 5mm x 250mm	BB5X250



Strengthen your outcomes today.

Call 1-866-4CONMED to schedule a trial with your local CONMED Representative.

For more information visit us at www.CONMED.com or scan QR code.



Toll Free: 1-866-4CONMED
International: 727-214-3000

customerexperience@conmed.com
internationalorders@conmed.com

www.CONMED.com/BioBrace

©2024 CONMED Corporation, 1363575377 5/24