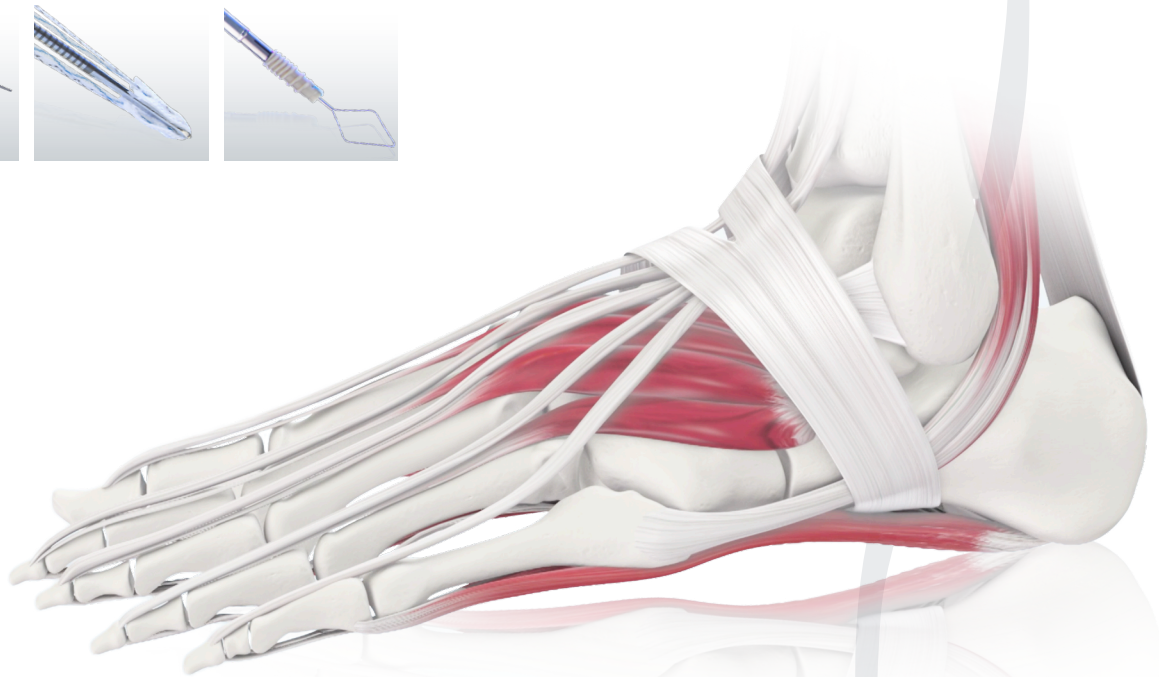
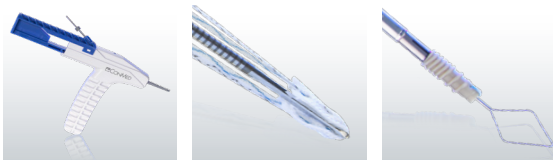




## Foot and Ankle Innovation Starts Here

For over 50 years, we've partnered directly with surgeons to develop a complete portfolio of the most forward-thinking, high-performance products available today for Foot and Ankle procedures. Whether it's innovative anchors that provide shallow placement options or resection blades designed specifically for small joint anatomy – CONMED's Foot and Ankle portfolio is the comprehensive solution you need to have an easier day in the OR.



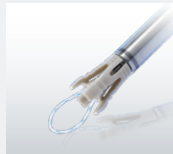
**CARTIMAX®**  
VIABLE CARTILAGE ALLOGRAFT



**HALL® MICROFREE®**  
CORDLESS POWER SYSTEM



**TENOLOK®**  
TENODESIS ANCHOR



To learn more about these and other innovative products, call **1-866-4CONMED** or visit **www.CONMED.com**.

TABLE OF  
CONTENTS

**All Suture Offerings**

TruShot® with Y-Knot® .....3  
Y-Knot® Portfolio .....4

**Hard Bodied Fixation**

CrossFT® PEEK.....5  
GENESYS CrossFT® .....5

**Knotless Fixation**

CrossFT® Knotless DT Suture Anchor .....6  
CrossFT® Knotless Suture Anchor .....6  
Poplok® Suture Anchor.....6

**Tenodesis Anchors**

TenoLok™ Dual-Expanding Tenodesis Anchor.....7  
GENESYS™ Matryx® Interference Screws .....7

**Ankle Arthroscopy Offerings**

**Small Joint Resection**

Mimix™ Blades and Burs .....8

**Positioning**

AssistArm® Ankle Distractor.....9  
Small Joint Tubing and Cannula Set.....9

**Hall® Powered Instruments and Accessories**

Hall® MicroFree® System .....10  
Hall® MicroFree® WireDriver .....11  
Hall® Titan® Series.....12  
Minimally Invasive Surgical (MIS) Burs.....13

**Legacy Linvatec Products**

**Reabsorbable Bone Fixation**

SmartNail® .....14  
SmartPin® .....14

**Legacy Suture Anchors**

UltraFix® MicroMite® Small Joint Suture Anchor.....15  
Mini Revo® Suture Anchor System .....15

**MTF Allografts and Biologics**

CartiMax® Viable Cartilage Allograft.....16

**ENHANCE® Line**

ENHANCE® Deformity Correction Allografts.....17  
ENHANCE® Demineralized Cortical Fibers.....17  
ENHANCE® Metatarsal Lengthening Grafts.....18

# TruShot® with Y-Knot®

Developed for small joint procedures with leading orthopedic surgeons, CONMED's TruShot® all-in-one deployment technology offers efficiency and accuracy in the OR.

## TruShot® with Y-Knot® Shallow 1.7mm All-Suture Anchor

with one #0 (3.5 metric) or #2-0 (3 metric) Hi-Fi® Suture with Needles

- Precise shallow anchor deployment technology
- Configuration of the Y-Knot® Shallow anchor requires only 10mm of tunnel depth
- Unique deployment mechanism deploys the anchor at the bottom of the tunnel to ensure secure fixation
- Allows anchor placement in areas of limited bone depth

## TruShot® with Y-Knot® 1.8mm All-Suture Anchor

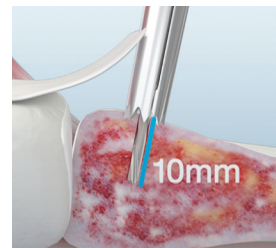
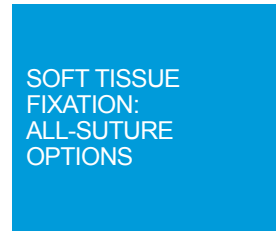
with two #2 (5 metric) Hi-Fi® Suture with Needles

- All-In-One delivery eliminates unnecessary steps and extra time
- Drill guide, drill bit, and anchor are combined into an easy-to-use delivery system
- Reduces the risk of misalignment during drilling and anchor insertion

## TruShot® with Y-Knot® 1.3mm All-Suture Anchor

with one #2 (5 metric) Hi-Fi® Suture with Needles

- Designed to provide the strong fixation surgeons need



TRUSHOT® WITH Y-KNOT® SHALLOW

Description	Catalog Number
TruShot® with Y-Knot® Shallow 1.7mm All-Suture Anchor with one #0 (3.5 metric) Hi-Fi® Suture with Needles	YSTN0
TruShot® with Y-Knot® Shallow 1.7mm All-Suture Anchor with one #2-0 (3 metric) Hi-Fi® Suture with Needles	YSTN20
TruShot® with Y-Knot® 1.8mm All-Suture Anchor with two #2 (5 metric) Hi-Fi® Suture with Needles	Y18TN
TruShot® with Y-Knot® 1.3mm All-Suture Anchor with two #2 (5 metric) Hi-Fi® Suture with Needles	Y13TN

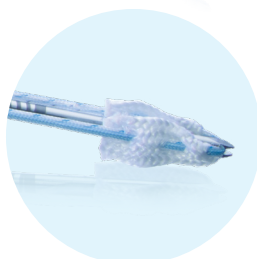
**SOFT TISSUE  
FIXATION:  
ALL-SUTURE  
OPTIONS**

## Y-Knot® Portfolio

The Y-Knot® RC offers strong fixation, less bone removal, and a simple, self-punching technique. The first self-punching all-suture anchor available, Y-Knot® RC streamlines procedures with an efficient technique that eliminates the need to create and find a pilot hole.

### Y-Knot® PRO RC Anchor, two #2 Hi-Fi® Sutures

- Combines our Y-Knot® anchor with cleatless suture release technology
- Eliminates the need for uncleating sutures after anchor implantation by providing a more efficient delivery system



### Y-Knot® RC with Needles, Double Loaded w/ two #2 Hi-Fi® Sutures

- Combines the benefits of the Y-Knot® RC with a mini-open system
- Ideal for open procedures

### Y-Knot® PRO RC Anchor, 2mm Hi-Fi® Tape (White/Black)

Hi-Fi® Tape is 69% less abrasive than the leading competitor when measuring tendon tear-through<sup>1</sup>

- Broader compression than #2 suture for increased tendon-to-bone interface
- More than twice as strong as #2 suture<sup>2</sup>
- Simplifies double-row repairs by eliminating need for medial knot tying



### Y-Knot® PRO RC Anchor, two Ribbons

Hi-Fi® Ribbon is a 1.3mm wide, flat, tie-able tape that is:

- 2X wider than #2 suture for broader compression and increased tendon-to-bone interface
- 14.0% stronger than high-strength USP #2 suture<sup>3</sup>
- Smaller knot stacks than USP #2 suture<sup>4</sup>

#### Description

Description	Catalog Number
Y-Knot® PRO RC with two #2 Hi-Fi® Sutures (White/Black)	YPRC02
Y-Knot® RC with Needles, Double Loaded with two #2 Hi-Fi® Sutures	YRC02N
Y-Knot® PRO RC with 2mm Hi-Fi® Tape (White/Black)	YPRCTW
Y-Knot® PRO RC with two 1.3mm Hi-Fi® Ribbons (White/Blue and White/Black)	YPRC02R

<sup>1</sup> Data on File TR16-787. Compared with FiberTape. TR16-787-1 <sup>2</sup> Data on file TR16-219

<sup>3</sup> Data on file: PDD1494993 <sup>4</sup> Data on file: TR17-01219

# CrossFT®

The CrossFT® (PEEK) and GENESYS CrossFT® (biocomposite) fully threaded suture anchors provide the combination of strength and reliability seldom found in other anchors. Cortical and cancellous threads provide fixation. The GENESYS CrossFT® anchor is composed of innovative GENESYS™ biocomposite material with proven bone in-growth<sup>1</sup> and exceptional pullout strength.<sup>2</sup>

SOFT TISSUE  
FIXATION:  
HARD BODIED  
FIXATION

## CrossFT® PEEK Suture Anchor

- All PEEK fully threaded anchor
- For medial row or primary fixation
- Cancellous and cortical threads provide exceptional fixation strength
- Broaching punch minimizes cortical stress fractures
- Cannulated to channel growth factors
- Double or triple loaded with Hi-Fi®

## GENESYS CrossFT®

- Biocomposite, fully-threaded anchor
- Composed of GENESYS™ biocomposite material, using microTCP technology
- For medial row or primary fixation
- Cancellous and cortical threads provide exceptional fixation strength
- Broaching punch minimizes cortical stress fractures
- Cannulated to channel growth factors
- Double or triple loaded with Hi-Fi®



### Description

CrossFT® PEEK 4.5mm Suture Anchor  
Suture Anchor w/Two #2 Hi-Fi Sutures w/  
needles

### Catalog Number

CFP-4502NB

CrossFT® PEEK 5.5mm Suture Anchor  
Suture Anchor w/Two #2 Hi-Fi Sutures w/  
needles

CFP-5502NB

4.5 GENESYS CrossFT® Suture  
Anchor w/Two #2 Hi-Fi Sutures w/needles

CFBC-4502NB

5.5mm GENESYS CrossFT® Suture  
Anchor w/Two #2 Hi-Fi Sutures w/needles

CFBC-5502NB

1 Daculsi et al. Biomaterials 2011. 2 Barber et al. Arthroscopy 2013.

## KNOTLESS FIXATION

### CrossFT® Knotless DT Suture Anchor

- Provides option to manually load Hi-Fi® Ribbon or Tape
- Controlled tension designed to optimize tendon compression
- Strong, deep thread pattern allows for cancellous bone fixation
- Bone marrow vent channel may provide healing properties of bone marrow

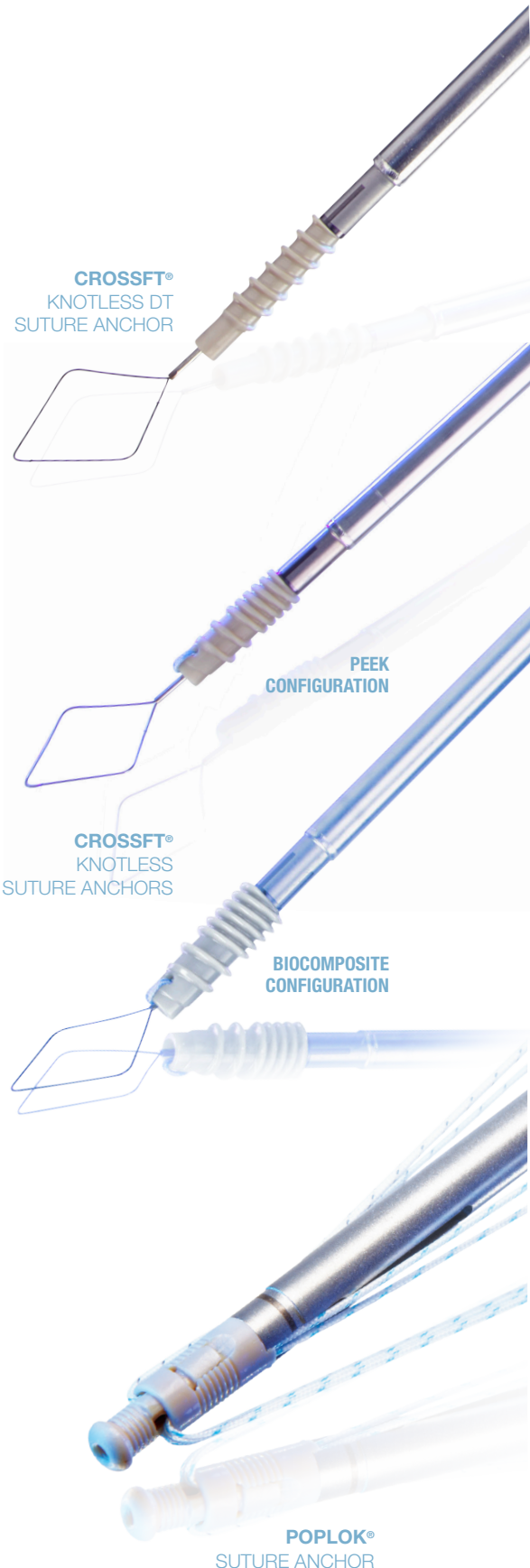
### CrossFT® Knotless Suture Anchor

- Knotless twist-in anchor for medial row, lateral row or primary fixation
- PEEK or Biocomposite
- Controlled tensioning mechanism to help keep set tension on tendon
- Multiple sizes available. 4.0mm, 4.75mm, or 5.5mm
- Kits will come with four anchors, one disposable CrossFT® Knotless Punch, and one Hi-Fi® Passing Loop

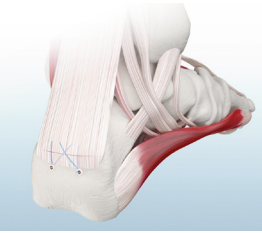
### PopLok® Suture Anchor

- Unique suture locking mechanism traps suture within the anchor, resulting in dependable fixation
- Ability to tension the suture after the anchor is seated in the pilot hole
- When the anchor is “popped,” the wings are deployed subcortically to provide secure fixation in the bone

Description	PEEK	Biocomposite
4.0 CrossFT® Knotless DT Anchor	CFK-40DT	–
4.75 CrossFT® Knotless DT Anchor	CFK-475DT	–
5.5 CrossFT® Knotless DT Anchor	CFK-55DT	–
4.0mm CrossFT® Knotless Anchor	CFK-40	CFKB-40
4.75mm CrossFT® Knotless Anchor	CFK-475S	CFKB-475S
5.5mm CrossFT® Knotless Anchor	CFK-55S	CFKB-55S
4.5mm PopLok® Suture Anchor (11mm length, Deployed)	CKP-4500	–



TENODESIS  
ANCHORS



## Tenodesis Options

### TenoLok® Dual-Expanding Tenodesis Anchor

- Designed to provide strong tendon-to-bone fixation, reduced tendon damage, and reduced tendon wrap damage
- Allows for a fast, efficient technique

### GENESYS™ Matryx® Interference Screws

- Provides an optimal combination of biologic healing\* and mechanical integrity
- Specially-designed interference screws deliver strong initial fixation during the critical healing period and provide a scaffold to enable bone in-growth during the subsequent resorption period

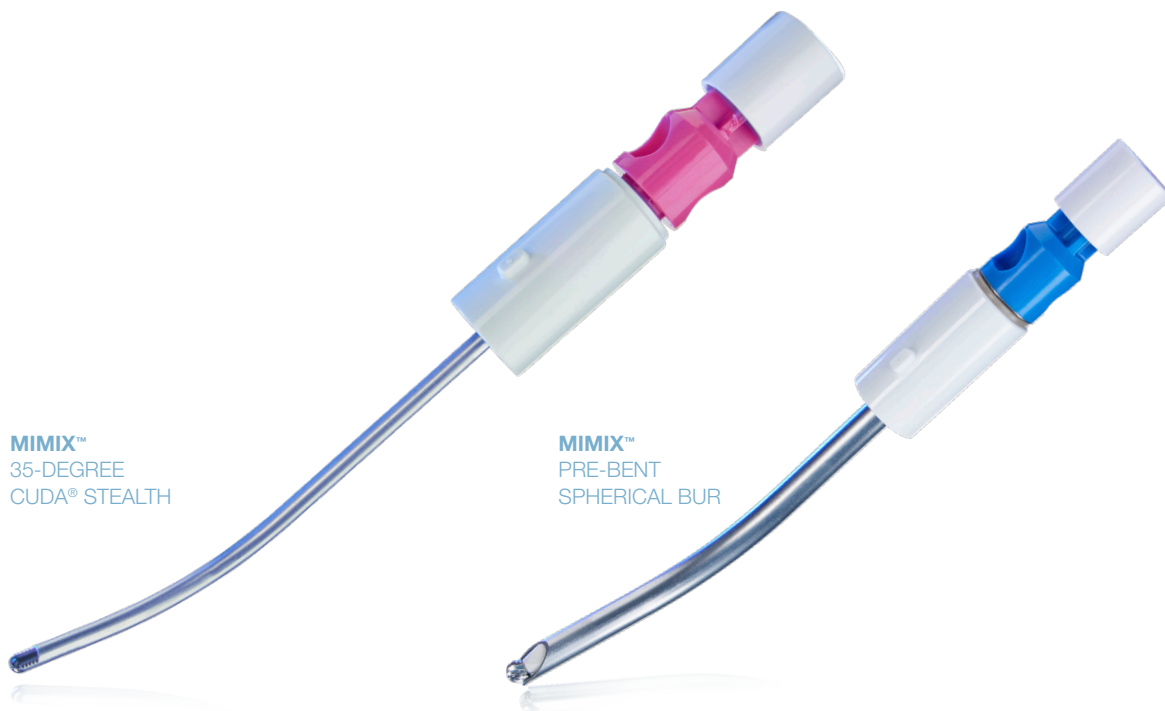
Description	Catalog Number
TenoLok® Tenodesis Anchor 5.0mm Loaded with One #2 Hi-Fi® Suture	T50S
TenoLok® Tenodesis Anchor 6.0mm Loaded with One #2 Hi-Fi® Suture	T60S
TenoLok® Tenodesis Anchor 6.0mm	T60A
GENESYS™ Matryx® 5mm x 15mm Interference Screw	235015M5
GENESYS™ Matryx® 5mm x 20mm Interference Screw	235020M5
GENESYS™ Matryx® 6mm x 15mm Interference Screw	236015M5
GENESYS™ Matryx® 6mm x 20mm Interference Screw	236020M5

**TENOLOK®**  
DUAL-EXPANDING  
TENODESIS ANCHOR



**GENESYS™ MATRYX®**  
INTERFERENCE  
SCREW





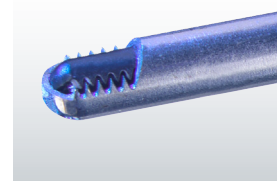
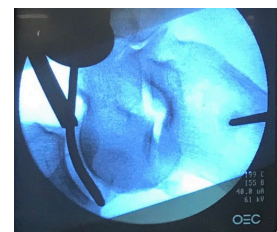
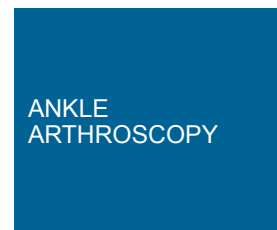
MIMIX™  
35-DEGREE  
CUDA® STEALTH

MIMIX™  
PRE-BENT  
SPHERICAL BUR

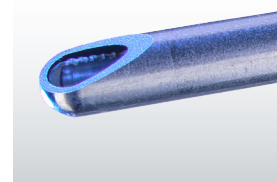
## Arthroscopy Offerings

### Mimix™ Small Joint Blades

- Contours to the talus with its unique 35-degree gradual bend
- Available in 2.9mm and 3.5mm configurations for convenient access in tight spaces
- Burs: 4mmx 8mm Pre-Bent Oval and Spherical available
- Reaches further than traditional 7cm small joint blades with 8cm working length
- Diamond-Like Carbon (DLC) coating on distal cutting tip has a lower coefficient of friction than standard steel
- Carbon coating also has shown reduced metal particulate generation when compared to leading competitors<sup>1,2,3</sup>
- Minimizes the need for a posterior portal during ankle scopes



COATED DISTAL TIP



COATED DISTAL TIP

### Description

Mimix™ 35-degree FRR Stealth™

Mimix™ 35-degree FRR Stealth™

Mimix™ 35-degree Cuda® Stealth

Mimix™ 35-degree Cuda® Stealth

Mimix™ Pre-Bent Oval Bur 4mm x 8cm with 35-degree gradual bend

Mimix™ Pre-Bent Spherical Bur 4mm x 8cm with 35-degree gradual bend

### Catalog Number

LE-29FRP

LE-35FRP

LE-29CUP

LE-35CUP

LE-400HP

LE-40SHP

<sup>1</sup>TR17-00073, <sup>2</sup>TR17-00165, <sup>3</sup>TR17-00073-1,



## ANKLE ARTHROSCOPY



ANKLE ATTACHMENT

## Positioning

### AssistArm®

The AssistArm® limb positioner offers single-handed precision positioning and traction. Most ankle procedures often require extensive traction to fully access the operating site. The ankle attachment and traction unit gives surgical teams single-handed precision positioning and traction control to streamline efforts and allow surgical staff to focus on core skills.

Description	Quantity	Catalog Number
AssistArm® Ankle Attachment	1	AA-A700
AssistArm® Sterile Kit Ankle Attachment	10	AA-A-KIT10

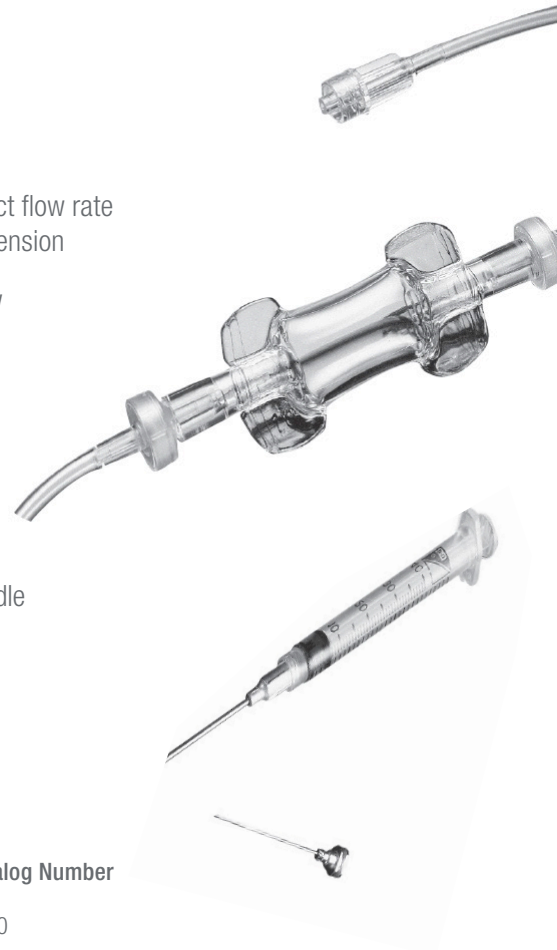
## Tubing

### Small Joint Tubing and Canula Set

- Beveled atraumatic tip
- Barbed design to prevent slippage
- Syringe injection port
- Inside diameter designed to maintain correct flow rate for clear field of vision and proper joint distension
- Series of one-way valves to prevent backflow
- Convenient hand pump to purge visual field
- Polyvinyl chloride material, latex free
- Packaged sterile, single-use, five per box

Set Includes:

- 2mm O.D. inflow cannula with matching needle
- 60" inflow tubing with one-way valves
- 3cc syringe
- Landmark probe



Description	Catalog Number
Small Joint Tubing and Cannula Set	9350



### Hall® MicroFree® System

Cordless, battery-powered, pencil-grip instruments for small bone application designed to provide both the freedom of a cordless device and the power surgeons need.

- Well-balanced ergonomic handpieces feel and work comfortably in surgeons' hands<sup>1</sup>
- Available in a surgeon-preferred pencil-grip design for precise cutting
- May reduce the potential risk contributing to SSLs, caused by unsecured power cords compromising the sterile field
- Backward-forward compatibility

#### Description

Hall® MicroFree® High Speed Drill  
 Hall® MicroFree® Medium Speed Drill  
 Hall® MicroFree® Sagittal Saw  
 Hall® MicroFree® Oscillating Saw  
 Hall® MicroFree® Reciprocating Saw

#### Catalog Number

PR08000SB  
 PR08100SB  
 PR08200SB  
 PR08300SB  
 PR08400SB



HALL® MICROFREE®  
 LITHIUM BATTERY AND  
 BATTERY CHARGER

<sup>1</sup> Data on File. TR17-00810, TR17-01199

**HALL®**  
POWERED INSTRUMENTS



HALL® MICROFREE®  
WIRE DRIVER



### Hall® MicroFree® WireDriver

Say goodbye to your heavy, motion-restricting pistol-grip handpiece. Part of CONMED's Hall® MicroFree® Cordless Small Bone Power System, the MicroFree® Wire Driver combines the comfort and precision of a pencil-grip handpiece with cordless freedom of motion.

- **Pencil-Grip Precision:** Ideal solution for tight anatomical spaces: Pencil-grip design is engineered to enable maneuverability, precision placement, and improved line of sight.
- **CordLESS:** Use the same lithium power unit as the rest of the MicroFree® System. Surgeons can easily position their wire exactly where they want it without being hindered by aggravating power cables or pneumatic hoses.
- **PowerFULL:** High-performance Lithium-ion technology provides the torque, power, and performance surgeons need.
- **IPX6, IPX8, IPX9 Rated:** Protected from moisture and fully autoclavable eliminating the need for more expensive STERRAD battery sterilization. UL-approved hermetically sealed power units allow the entire system to be sterilized together.<sup>1</sup>

#### Description

Hall® MicroFree® Wire Driver

#### Catalog Number

PR08600SB



## Powered Instruments

### Hall® Titan® Series

Refined for peak performance, the Hall® Titan® Series is the next generation of powerful, precise, and reliable orthopedic power tools from the name that's been trusted for over 55 years.

- Available in 2.9mm and 3.5mm configurations for convenient access in tight spaces
- Powerful Hall® lithium batteries deliver long-lasting, high torque power
- Variable speed control and anti-vibration design engineered for controlled precision
- Ergonomic design<sup>1</sup> and reduced weight<sup>2</sup> designed for optimal user comfort
- One-step sterilization reduces steps by allowing hand-pieces and batteries to be sterilized in the same tray at the same time
- Backwards and forwards compatible
- Lower initial purchase costs and lower lifetime operational costs<sup>3</sup>



HALL® TRAY

#### Description

Hall® Titan® 1-Trigger Modular Drill  
 Hall® Titan® 2-Trigger Modular Drill

#### Catalog Number

PR09100B  
 PR09200B

<sup>1</sup> Data on File, UL file E350964-A10. <sup>2</sup> Compared to Hall 50™ Handpieces

<sup>3</sup> Compared to Stryker Systems that require two different handpieces for large and small bone and non-autoclavable batteries that require separate, more costly sterilization.

# MIS Burs

## Burs for Percutaneous Foot Surgery

Designed for percutaneous foot surgery, CONMED MIS Burs are available in a wide range of flutes and lengths for specific foot procedures.

MIS  
BURS

- Minimally invasive, the small size of MIS Burs allows surgeons to access the surgical site using small openings. MIS Burs are designed to deliver cuts no longer than 5mm.
- Designed for specific foot procedures, MIS Burs features a wide range of sizes and indications for percutaneous foot surgery.<sup>1</sup>
- For sharpness and performance, MIS Burs are offered for single-use only.

- Shannon Recta Corta, Steel Bur  
Ø 2.00 mm, L = 65.00 mm
- Shannon Recta, Steel Bur  
Ø 2.20 mm, L = 65.00 mm
- Shannon Recta Larga, Steel Bur  
Ø 2.20 mm, L = 75.00 mm
- Shannon Recta 3 Larga, Steel Bur  
Ø 3.10 mm, L = 70.00 mm

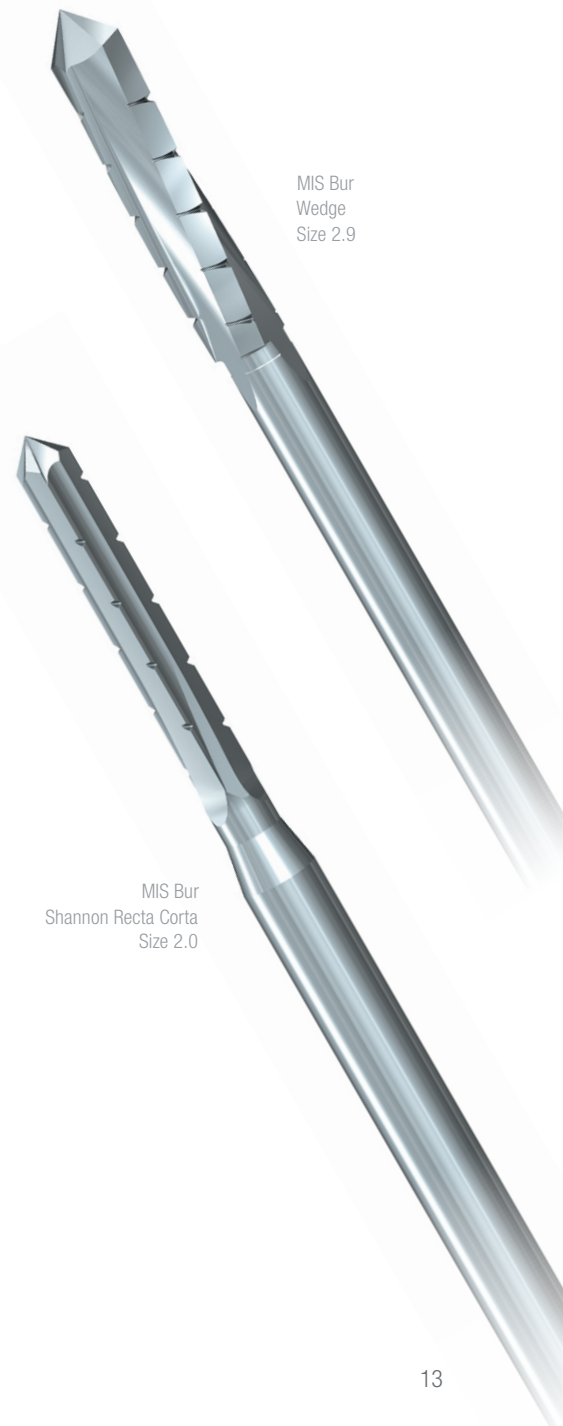
- Shannon Corta, Steel Bur  
Ø 2.00 mm, L = 65.00 mm
- Shannon Larga, Steel Bur  
Ø 2.20 mm, L = 65.00 mm
- Wedge 3, Steel Bur  
Ø 2.90 mm, L = 65.00 mm
- Wedge 3, Steel Bur  
Ø 4.30 mm, L = 65.00 mm

### Description

Shannon Recta Corta, Steel Bur  
Shannon Recta, Steel Bur  
Shannon Recta Larga, Steel Bur  
Shannon Recta 3 Larga, Steel Bur  
Shannon Corta, Steel Bur  
Shannon Larga, Steel Bur  
Wedge 3, Steel Bur  
Wedge 4, Steel Bur

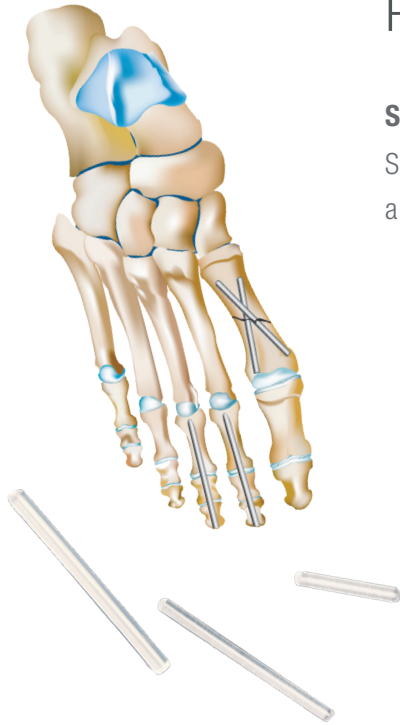
### Catalog Number

1375-050  
1375-051  
1375-052  
1375-053  
1375-054  
1375-055  
1375-056  
1375-057



<sup>1</sup> Data on File. Komet IFU#314080.

## Reabsorbable Bone Fixation



### SmartPin®

SmartPin® Implants, made of PLLA, are available individually packed and sterile in a wide range of sizes and lengths.

- Provides excellent non-load bearing immobilization of cancellous bone fragments
- Eliminates the need for implant removal
- No stress shielding
- Self-Reinforced technology allows CONMED to manufacture a strong absorbable pin

#### Description

SmartPin® 1.5mm, 10, 20, 30, 40, 50, 60, 70mm  
SmartPin® 2.0mm, 20, 25, 30, 35, 40, 50, 60, 70mm

#### Catalog Number

121510 - 121570  
122020 - 122070

### SmartNail®

The SmartNail® bio-absorbable Bone Fixation Nail is indicated for use in the fixation of fragments of fractured non-load bearing bones, osteotomies and arthrodeses (for example in the fixation of apical fragments), osteochondral fragments, and cancellous/ non-load bearing fragments. The SmartNail® implant is constructed of Self-Reinforced 96L/4D PLA copolymer material, which allows secure fixation in combination with suitable immobilization. The SmartNail® implant loses its strength during 20 – 50 weeks in vivo, which is within a corresponding period of time for a fracture of bone to heal. The SmartNail® implant biodegrades in bone tissue during approximately 2 – 3 years in vivo. This eliminates the need for a second operation to remove nonabsorbable fixation devices after the healing of the fracture. The implant is sterile, inert, and non-collagenous.

#### Description

SmartNail® (96L/4D) PLA, 1.5mm O.D. x 16mm L  
SmartNail® (96L/4D) PLA, 1.5mm O.D. x 20mm L  
SmartNail® (96L/4D) PLA, 1.5mm O.D. x 25mm L  
SmartNail® (96L/4D) PLA, 2.4mm O.D. x 16mm L  
SmartNail® (96L/4D) PLA, 2.4mm O.D. x 25mm L  
SmartNail® (96L/4D) PLA, 2.4mm O.D. x 35mm L  
SmartNail® (96L/4D) PLA, 2.4mm O.D. x 45mm L

#### Catalog Number

351516  
531520  
531525  
532416  
532425  
532435  
532445



# Legacy Suture Anchors

LEGACY  
LINVATEC  
PRODUCTS

## UltraFix® MicroMite® Small Joint Suture Anchor

Small size, rigid fixation. The UltraFix® MicroMite® Suture Anchor System offers superior holding strength and small size in an easy-to-use system. With an optimal predeployed diameter of 1.5mm, the UltraFix® MicroMite® Anchor can be used ideally in the following indications:

- Hallux valgus reconstructions
- Midfoot reconstruction inserter facilitates placement the ergonomically designed UltraFix® MicroMite® Insertion Gun makes anchor placement quick and easy for any procedure. It allows one-handed insertion and hole marking. Your hand does not block the line of sight and no pushing is required. The UltraFix® MicroMite® Anchor is locked on the Insertion Gun until you release it — no “stay” suture is required. Proper placement and alignment can be checked before deployment. Tactile and audible feedback indicate when the anchor is locked in place. 1.5mm

### Description

UltraFix® MicroMite® StitchPak®  
Drill, 1.8mm  
Insertion Gun  
Instrument Tray

### Catalog Number

10298  
10297  
10299  
10300



## Mini Revo® Suture Anchor System

Screw-in titanium 2.7mm implant provides superior bone purchase

### Description

Mini Revo® Suture Anchor,  
Pre-Threaded with #2 Polyester Suture,  
2.7mm O.D. x 8.5mm L, Implant and Suture Only  
Mini Revo® Suture Anchor,  
Pre-Threaded with #2 Hi-Fi® Suture,  
2.7mm O.D. x 8.5mm L, Implant and Suture Only  
Mini Revo® Driver

### Catalog Number

C6109A  
C6109H  
C61110A  
15



## MTF Allografts and Biologics

### CartiMax® Viable Cartilage Allograft

- CartiMax® is viable, cartilage fibers combined with cartilage allograft matrix to make a biologically-active scaffold with putty-like handling characteristics used to treat focal cartilage defects.
- Characterization testing of CartiMax® verifies the presence of functioning viable chondrocytes and chondrogenic growth factors.<sup>1</sup> Multiple studies have demonstrated that chondrocytes migrate and proliferate from the cartilage fibers and secrete components found in hyaline cartilage.<sup>2,3,4</sup>
- This product offers the potential to facilitate cartilage healing and regeneration along with ease of use.

#### Description

CartiMax® Viable Cartilage Allograft

#### Catalog Number

401205

VIABLE  
 CARTILAGE  
 ALLOGRAFT

**MTF**  
**ADVANTAGE**

No Terminal Radiation  
 No Harsh Chemicals

Over 9 million grafts distributed

<sup>1</sup>Data on File, MTF Biologics. <sup>2</sup>Albrecht F, Roessner A, Zimmermann E. Closure of osteochondral lesions using chondral fragments and brin adhesive. Archives of orthopaedic and traumatic surgery Archiv fur orthopadische und Unfall-Chirurgie. 1983;101:213-7. [PubMed].

<sup>3</sup>Lu Y, Dhanaraj S, Wang Z, et al. Minced cartilage without cell culture serves as an effective intraoperative cell source for cartilage repair. Journal of orthopaedic research : official publication of the Orthopaedic Research Society. 2006;24:1261-70. [PubMed].

<sup>4</sup>Frisbie DD, Lu Y, Kawcak CE, DiCarlo EF, Binette F, McIlwraith CW. In vivo evaluation of autologous cartilage fragment-loaded scaffolds implanted into equine articular defects and compared with autologous chondrocyte implantation. The American journal of sports medicine. 2009;37(Suppl 1):71S-80S.



ENHANCE®



EVANS WEDGE



COTTON WEDGE



DEMINERALIZED  
CORTICAL FIBERS

## ENHANCE®

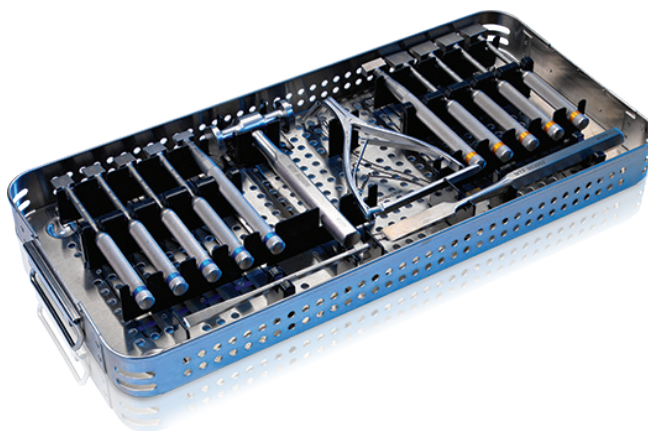
### ENHANCE® Deformity Correction Allografts

The ENHANCE® line provides allograft solutions for small bone procedures, such as mid-foot and fore-foot deformity correction, flatfoot deformity correction, interpositional arthroplasty, bone grafting, fracture reconstruction, and osteotomy fixation.

- Pre-Shaped allograft wedges
- Dense cancellous bone provides an excellent reincorporation environment
- Two-side cortical rim provides structural strength
- Pre-sized design eliminates the need for intraoperative shaping
- Cotton and Evans technique specific shapes

### ENHANCE® Demineralized Cortical Fibers

ENHANCE® Demineralized Cortical Fibers are a unique and versatile bone void filler comprised of 100% demineralized cortical bone, offering surgeons putty-like handling characteristics and the ability to customize the rehydration process with BMA, PRP, whole blood, or saline. In pre-clinical models, ENHANCE® Demineralized Cortical Fibers have been shown to provide consistent osteoinductive potential at higher levels than observed in alternate bone graft options.<sup>1</sup>

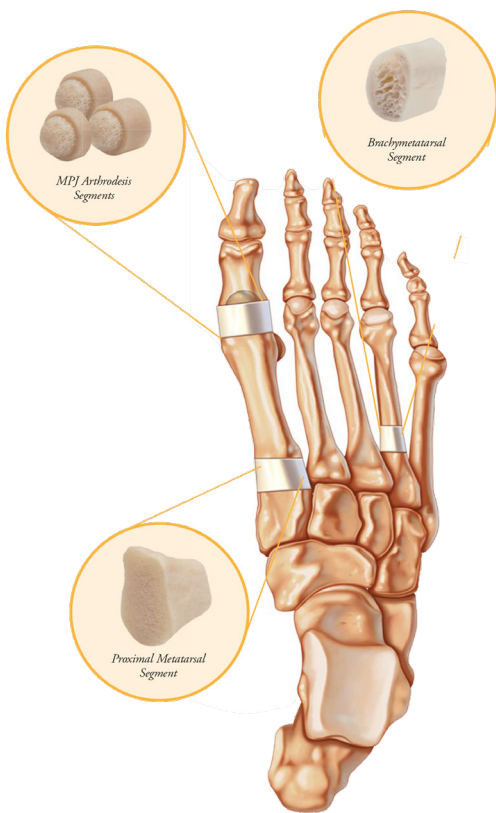


ENHANCE®  
ALLOGRAFT WEDGE INSTRUMENT TRAY

In Partnership with:  
**mtfbiologics**

<sup>1</sup> Data on File, MTF

METATARSAL  
LENGTHENING  
GRAFTS



**ENHANCE® Metatarsal Lengthening Grafts**

- The precise anatomical shape of each graft minimizes the need for additional bone void filling
- Multiple sizes are available, addressing the most common requirements for metatarsal lengthening procedures
- Grafts may be custom sculpted, after rehydration, to fit the patient's anatomy
- Allograft segments deliver an ideal balance of circumferential cortical bone for structural strength and dense cancellous bone for reincorporation following surgery

**Description**

**Catalog Number**

CartiMax® Viable Cartilage Allograft	401205
Evans Wedge 6.00mm, Freeze-Dried	403106
Evans Wedge 8.00mm, Freeze-Dried	403108
Cotton Wedge 5.00mm, Freeze-Dried	403205
Cotton Wedge 6.00mm, Freeze-Dried	403206
Cotton Wedge 7.00mm, Freeze-Dried	403207
Cotton Wedge 8.00mm, Freeze-Dried	403208
ENHANCE® Demineralized Cortical Fibers, 10cc	422206
ENHANCE® Demineralized Cortical Fibers, 5cc	422205
ENHANCE® Demineralized Cortical Fibers, 2.5cc	422204

**MPJ ARTHRODESIS SEGMENTS (FROZEN)**

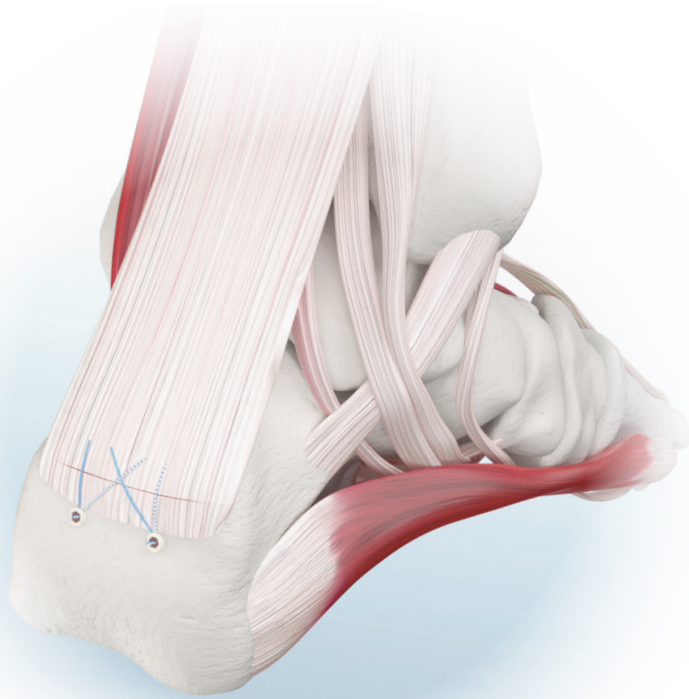
Code	Length
452105	5mm
452108	8mm
452112	12mm

**PROXIMAL METATARSAL SEGMENTS (FREEZE DRIED)**

Code	Size
404200	Universal

**BRACHYMETATARSAL SEGMENTS (FREEZE DRIED)**

Code	Length	Size
404306	6mm	Small
404308	8mm	Small
404310	10mm	Small
404406	6mm	Large
404408	8mm	Large
404410	10mm	Large



 **CONMED**

*Imagine What We Could Do Together*



## Foot and Ankle Platform

CONMED Corporation  
11311 Concept Blvd.  
Largo, FL 33773

Toll Free: 1-866-4CONMED  
International: 727-214-3000  
[www.CONMED.com](http://www.CONMED.com)

[customerexperience@CONMED.com](mailto:customerexperience@CONMED.com)  
[internationalorders@CONMED.com](mailto:internationalorders@CONMED.com)

