



Imagine What We Could Do Together.



# ▶ The Tissue is the Issue™

BioBrace® can help.

## ▶ BioBrace®

Reinforced Bioinductive Implant



### Reinforce

Provides supplemental strength through load sharing <sup>1,2</sup>

### Regenerate <sup>1,2</sup>

Bioinductive scaffold facilitates and optimizes healing <sup>1,2</sup>

Learn more at [www.CONMED.com/BioBrace](http://www.CONMED.com/BioBrace)



Scan here to access  
BioBrace clinical literature  
compendium



<sup>1</sup> K203267 – 510(k) Clearance Letter - The BioBrace® Implant

<sup>2</sup> Based on preclinical animal data

# Raise the bar on your repairs with BioBrace®

- ✓ Off-the-shelf and ready when you need it
- ✓ Excellent handling characteristics
- ✓ A versatile augment for 40+ procedural anatomies and counting:

KNEE: ACL, MCL, MPFL, and more | SHOULDER: Rotator Cuff, Subscap TSA, and more

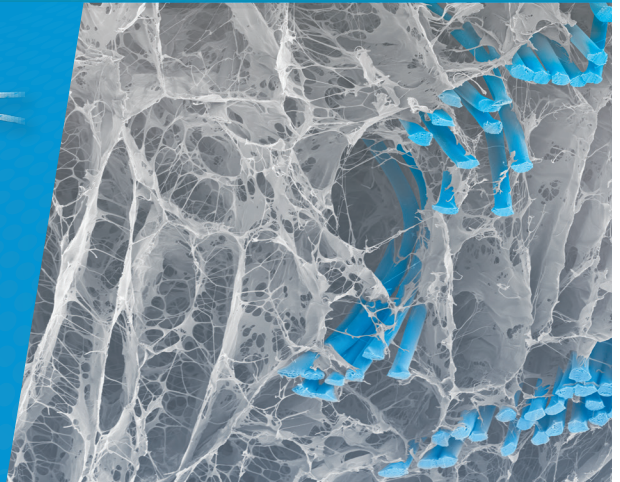
HIP: Glut Med, Capsule, and more | FOOT AND ANKLE: Achilles, Peroneal Ligament, and more



5 mm x 250 mm



23 mm x 30 mm

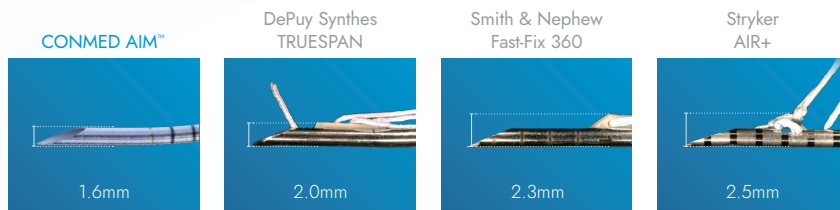




> **Infinity AIM™**  
Meniscal Repair Device

## Maximize Your Repair with Minimal Anatomic Disruption

AIM™'s hidden implant design reduces piercing diameter by up to 36%\*



1 When compared to other devices on the market in side-by-side testing.

\*Piercing diameter defined as the highest diameter that would pierce the meniscus with an exposed implant and needle combined. PDD1924378.

### Ergonomic Design, Simple Technique

- Adjustable sheath fully covers the needle and allows for sled-less joint insertion
- In-line trigger allows for easy actuation from any position
- In-joint tensioning gives you control close to the meniscus



AIM™ for a better repair.

# One System with Infinite Possibilities

## > Infinity™ Knee System

Modular ACL & PCL Reconstruction Platform

### Adjustable, Reversible Button

Allowing surgeons to relengthen the graft loop and reposition the graft within the femoral and tibial tunnels.

### One Modular System

The versatile Infinity™ Knee System supports:

- All-inside and anteromedial techniques
- Straight, curved, and retro-reaming preferences
- Fixation for both soft tissue and soft tissue and bone grafts

### Designed by Innovators

A complete system designed to provide versatility, efficiency, and an easier day in the OR.



See the Infinity™ Knee System in action

# Simplify Your Shoulder Repairs

## > **Argo Knotless<sup>®</sup>**

Suture Anchor

### **Controlled Tension**

Smart Tension Technology eliminates the risk of over-constraining tissue

### **Intuitive design**

No need to change your current technique

### **Simple Technique**

Self-punching option and quick release driver eliminate steps for a streamlined procedure



[Learn More](#)

# › Y-Knot® PRO RC

## Self-Punching All-Suture Anchor

### Self Punching

No pilot hole required, eliminating an extra step

### Small

2.8mm footprint offers more tendon-to-bone contact

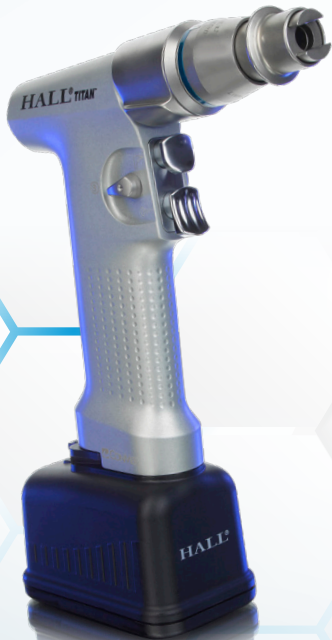
### Cleatless Handle

Pre-loaded with multiple suture options, including Hi-Fi® Tape, Ribbon, and #2 Hi-Fi® Suture



Learn More —  
Y-Knot® Pro RC

# ▶ Demand Excellence. Demand Hall® Titan®.



## ▶ Hall® Titan®

### Power Series

Powerful, precise, and reliable orthopedic power tools from the name that's been trusted for over 55 years.

### Clinical Performance

The high torque and long-lasting power you need with variable speed control and anti-vibration features to support precision.

### Operational Efficiency

One-Step Sterilization allows handpieces and batteries to be sterilized together in the same tray without the concern of water intrusion<sup>3</sup>

### Total Value

Reduce overall costs with a single system platform and reduce upgrade costs with backward and forward compatibility.

<sup>3</sup>Data on File, UL file E350964-D1012-1/A2/CO-UL, TR13-853 and TR14-008.

<sup>4</sup>Compared to Stryker Systems that require two different handpieces for large and small bone and non-autoclavable batteries that require separate, more costly sterilization.



**NEW!**

*The latest addition to the Hall® Large Bone Portfolio*

## > Hall® Pin and Wire Drivers

### Improved Engagement

Requiring less exposed wire to effectively grasp

### Narrow Nose

For better visibility and closer pin and wire placement

### Lever Optimization

Optimized to enable a greater grip strength

Request the new Hall® Pin and Wire Drivers for your next case!



# Feel the Freedom

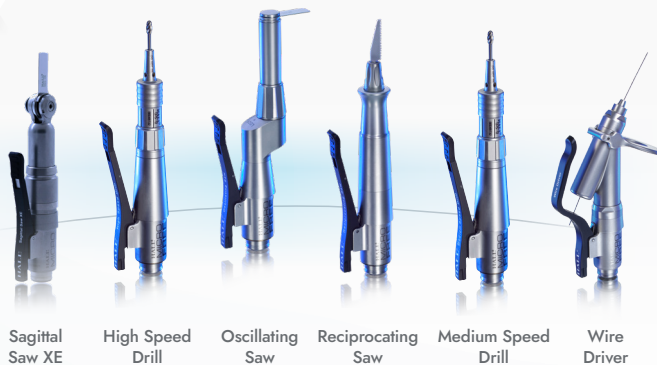
## > Hall® MicroFree®

Cordless Small Bone Power System

Designed to deliver comfort and simplicity with the performance and reliability you expect from Hall®.

- Cordless handpieces are designed to improve hand positioning and maneuverability.
- Well-balanced, ergonomic handpieces are designed to perform comfortably in surgeons' hands.<sup>4</sup>
- Engineered for precision cutting, MicroFree® handpieces come in an adjustable pencil grip design.

[www.CONMED.com/MicroFree](http://www.CONMED.com/MicroFree)



<sup>4</sup>Data on File. TR17-00810, TR17-01199.



**NEW!**

*The latest addition to the MicroFree® family*

.....

## > Hall® MicroFree® Sagittal Saw XE

**Maximize Cutting, Minimize Impact**

True 5-degree Arc improves cutting efficiency while protecting surrounding tissue.<sup>5</sup>

**Optimized for Security and Visibility**

- Collet configured for intuitive blade loading
- Rounded body designed to improve visibility<sup>6</sup>

**Cut confidently with the MicroFree® Sagittal Saw XE.**



<sup>5</sup> PDD1945384

<sup>6</sup> Data on file, PDD1904630

# ▶ Your All-in-One Fixation Solution

## ▶ TruShot® with Y-Knot®

All-In-One Soft Tissue Fixation System for Small Joint

- Easy-to-use delivery system designed to reduce the risk of misalignment during drilling and anchor insertion.
- Y-Knot® Shallow anchor requires only 10mm of tunnel depth.
- Strong all-suture construct provides excellent fixation strength<sup>8</sup> while leaving no hard anchors in the joint.



*Learn more about the benefits of the TruShot® with Y-Knot® all-in-one-system!*



# ▶ The Future of Surgical Training. Now.

BRINGING INNOVATION TO MEDICAL EDUCATION

 **VRthroscopy™**

*The World's First Virtual Reality Based Arthroscopy Simulator.\**

Designed in conjunction with PrecisionOS, CONMED's **VRthroscopy™** modules represent a true breakthrough in surgical training.

Shoulder **VRthroscopy™**

- Double Row Rotator Cuff Repair

Knee **VRthroscopy™**

- Soft Tissue AM Portal ACLR featuring the Infinity™ Knee System
- Infinity™ All-Inside ACL Reconstruction
- Functional Anatomy and Diagnostic Scope

Hip **VRthroscopy™**

- CAM Resection featuring the Paradigm® Hip System

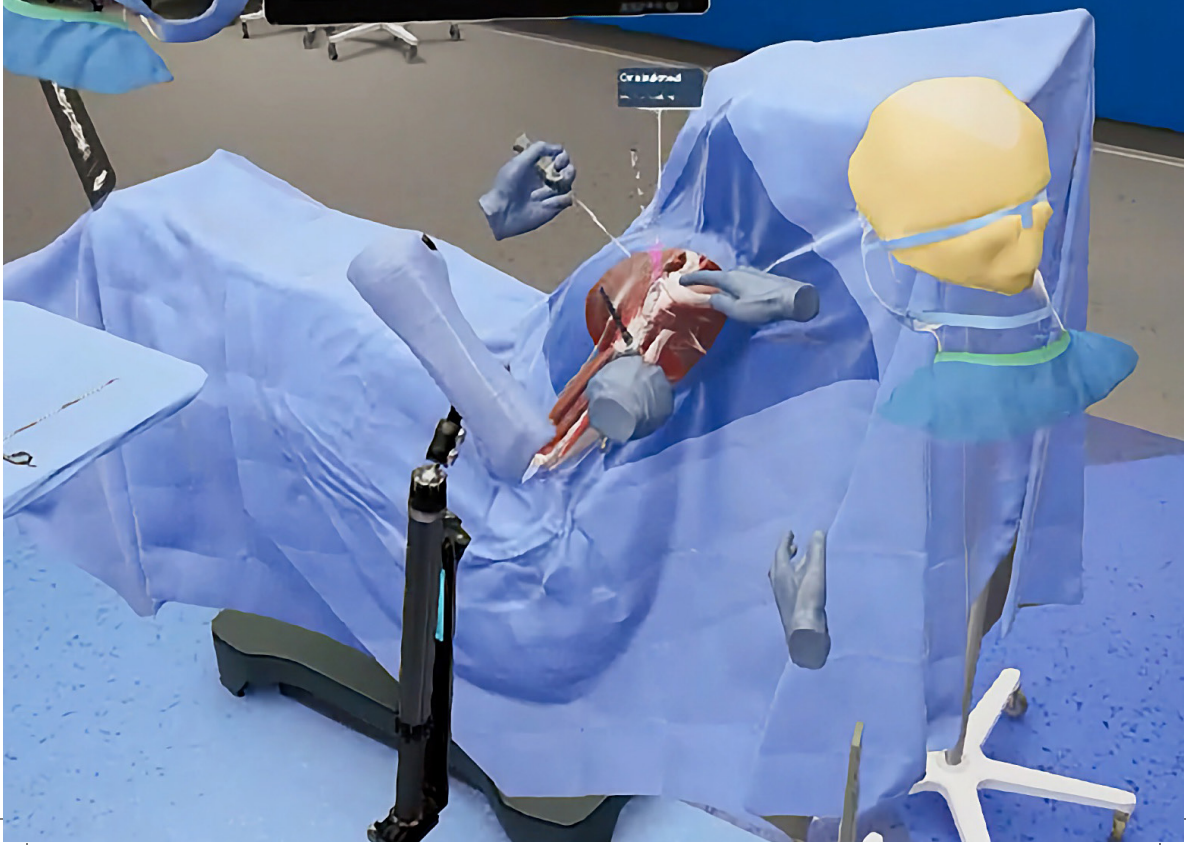
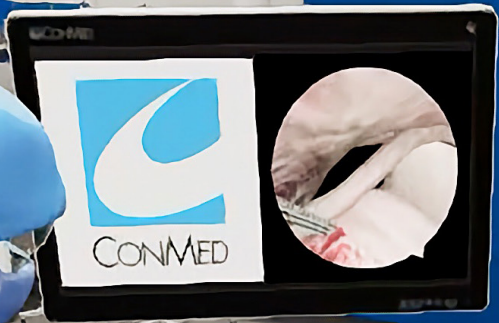
General **VRthroscopy™**

- Arthroscopy Scope Skills Trainer

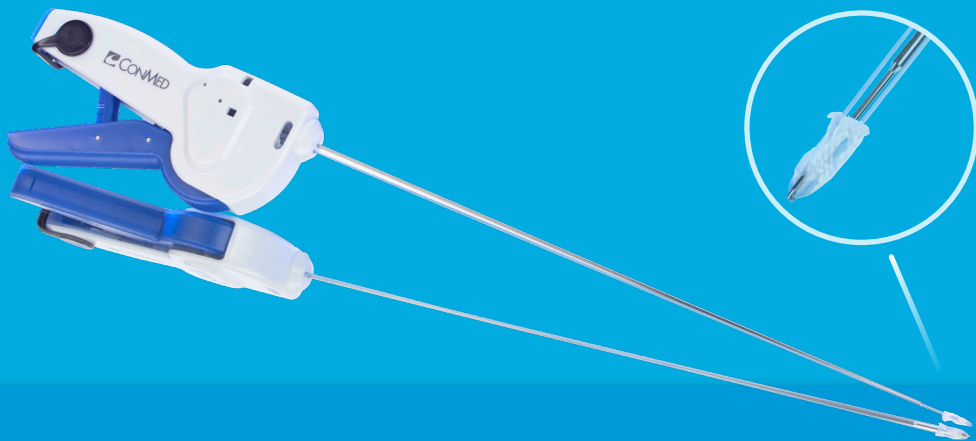
*Check out the research associated with VR in surgical training  
[PrecisionOS<sup>te</sup>ch.com/research](https://www.precisionostech.com/research)*

\*Based on market analysis 2023





# ▼ Click Your Way To A Better Labral Repair



## ➤ Paradigm® ClickLok™

All-Suture Anchor System for Hip Labral Repairs

Designed to offer the simplicity and reliability you deserve.

# CONMED's Latest Innovation In Acetabular Labral Fixation For Hip

## ► Paradigm® ClickLok™

All-Suture Anchor System for Hip Labral Repairs

### Simple

The ergonomic delivery system and patented deployment technique allow you to place the anchor with one-hand. Now you can keep control of your scope for a seamless repair.

### Reliable

The patented mechanical deployment mechanism is designed to ensure consistent and secure fixation, with an audible indicator that confirms final deployment.

### Bone Sparing

The 1.8mm ClickLok™ is designed to provide secure fixation with a minimal footprint, helping to preserve crucial bone around the acetabular rim.



*Ready to click your way to a better labral repair?  
Call 1-800-4CONMED to schedule a demonstration.*



# Experience A Paradigm Shift In Hip Arthroscopy

## > Paradigm®

### Tactile Needle

- Features a spring-loaded blunt obturator which pops out when in open joint space, intended to reduce the risk of damage to the femoral head, cartilage, labrum, and other soft tissues.

## > Paradigm® EZ Switch®

- Designed to save time so you can easily switch portals without sleds or switching sticks.



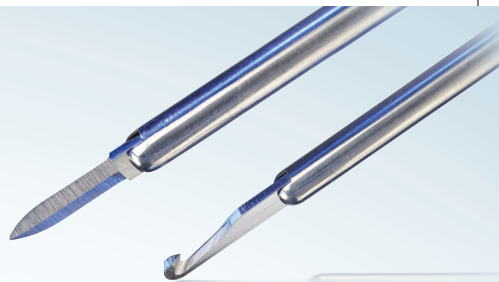
See how Paradigm® can  
increase patient safety and  
efficiency in your practice.



## > **Paradigm®**

### Retractable Blades

- Designed for safety, the Paradigm® Retractable Straight Blade and Hook Blade feature a retractable blunt sheath that protects the articular cartilage and soft tissue from the blade.



## > **Signature Series™**

### Blades & Burs

- The Signature Series™ hip blades and burs are designed exclusively for use in the hip joint, with procedure specific curvature to enable more effective reshaping of the anatomy.



## > **Paradigm®**

### Curved Knot Pusher

- To help facilitate knot tying in challenging anatomy, the Paradigm® Curved Knot Pusher is designed to simplify and streamline knot tying in the hip.



CONMED | MTF BIOLOGICS

▶ **When Outcomes  
Matter, Choose  
MTF Biologics.<sup>12</sup>**

No harsh chemicals like H<sub>2</sub>O<sub>2</sub> or terminal radiation that may compromise the tendon's natural biomechanical properties.



<sup>12</sup> Tejwani et al, 2015: Revision Risk After Allograft Anterior Cruciate Ligament Reconstruction: Association With Graft Processing Techniques, Patient Characteristics, and Graft Type. Am J Sports Med. 2015 Nov;43(11):2696-705. Individual pictured is not a surgical patient. Results may vary.

# Reshaping the Future of Cartilage Repair

## > CartiMax<sup>®</sup>

Viable Cartilage Allograft

### Viable Chondrocytes

Characterization testing of CartiMax<sup>®</sup> verifies presence of functioning viable chondrocytes & chondrogenic growth factors.<sup>13</sup>

### Optimal Handling Properties

CartiMax<sup>®</sup> has putty-like handling properties and easily conforms to defects of different shapes and sizes.

### 24-Month Shelf-Life

An off-the-shelf solution that demonstrates stable viability up to twenty-one months post-cryopreservation.<sup>13</sup>

### High-Volume of Material

One package of CartiMax<sup>®</sup> contains enough cartilage matrix to fill a 5cm<sup>2</sup> lesion.

Treating cartilage lesions in foot and ankle? Consider CartiMax<sup>®</sup> FA.



Learn More Here



View a Viability Characterization Whitepaper



View a Retention Study Whitepaper



View Animal Study



View Cellular Characterization Study

<sup>13</sup> Data on File, MTF Biologics

# ▶ Redefining Excellence in Arthroscopy

INTRODUCING

## > Looking Glass®

4K Integrated Visualization System

Technology that helps you see today, with  
durability that ensures you see tomorrow.



Visit [www.CONMED.com/LookingGlass](http://www.CONMED.com/LookingGlass) to experience  
the advancement in 4K Integrated Visualization

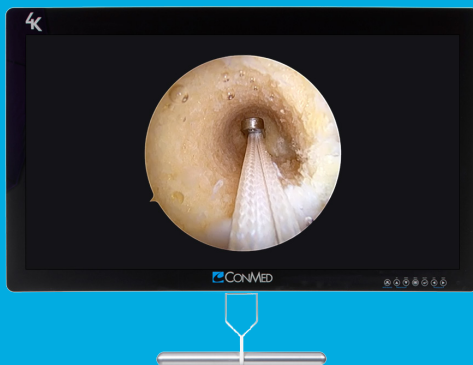
## Reimagining Surgical Lighting

- Eliminates fragile fiber-optic cables
- Reliable LED light in a rugged, durable design



eLuma™  
Electronic Light Guide

Looking Glass® 4K  
Integrated Visualization System



## Innovative All-In-Monitor Design

- Camera and light source controller are integrated into the stunning 32" 4K monitor, freeing up shelf space
- High-performance 4K imaging in an easy-to-use, intuitive user interface

## 3-Chip 5-Button Camera Head for Easy Intraoperative Adjustments

- Customizable surgeon controls
- Fully autoclavable with 7 Year Warranty



Looking Glass® 4K  
Camera Head

# When it comes to Arthroscopy, no one offers more than **CONMED.**

CONMED has been at the forefront of arthroscopy since 1997. Our goal? To bring you a broad portfolio that meets your clinical, operational, and economic needs.

## > **CrystalView™ Pro** Fluid Management System

Designed for **high performance** and **simplicity**.



## > **D4000** Arthroscopic Resection System

A **tried-and-true** interface.



> Ergo™

Shaver Handpiece

Ergonomically engineered to provide optimal balance and control.



Explore your complete arthroscopic solution here >>





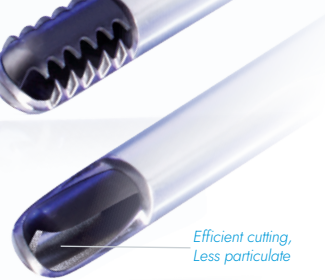
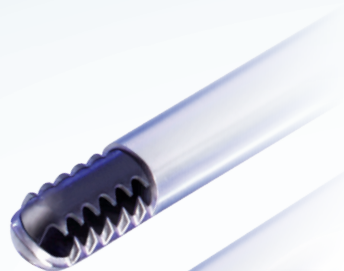
# Resection

## > Stealth™

### Diamond-Like Carbon Coated Blades

- Tighter clearances between the inner and outer cutting tips creates a cleaner more efficient cut.<sup>14, 15</sup>
- Diamond-Like Carbon (DLC) Coating on distal tip designed to reduce particulate generation.
- Full Length of shrink (lubrication) prevents metal on metal contact, reducing metal particulate generation.<sup>16</sup>
- Full portfolio of sizes.

[www.CONMED.com/Stealth](http://www.CONMED.com/Stealth)



*Efficient cutting,  
Less particulate*

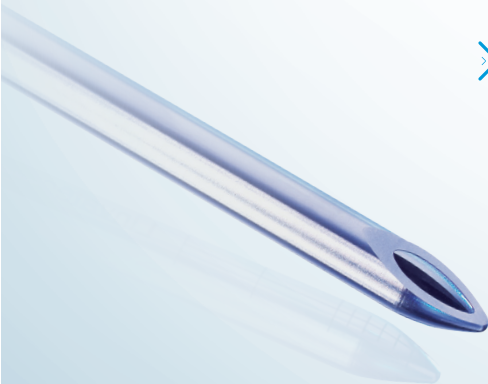
## > Lanza™

### Tapered Specialty Shaver Blade

- Tapered distal tip, smooth cutting profile, and dual-inner cutting windows.
- Designed to provide precise, efficient resection in tight anatomical spaces and around sensitive structures.

[www.CONMED.com/Lanza](http://www.CONMED.com/Lanza)

<sup>14</sup> Compared to 1-piece design: data on file;  
TR13-200 <sup>15</sup> TR13-200 <sup>16</sup> TR17-00566-2



# Ablation

> **Edge<sup>®</sup>**

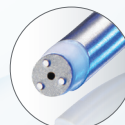
Bipolar Arthroscopic RF System

- Aggressive soft tissue ablation with real-time, in-joint temperature monitoring, and one-piece tungsten electrode design.
- 50° and 90° probes with suction for shoulder, knee, and hip procedures.
- 30° probe for extremities and small joint procedures.

[www.CONMED.com/Edge](http://www.CONMED.com/Edge)



30° Probe



50° Probe



90° Probe

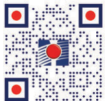




LEADERS

IN  
CHANGE

A leader in delivering trusted  
medical device and technology  
across Southern Africa.



Telephone: +27 (11) 966 0600  
info@medhold.co.za

**MEDHOLD.CO.ZA**

