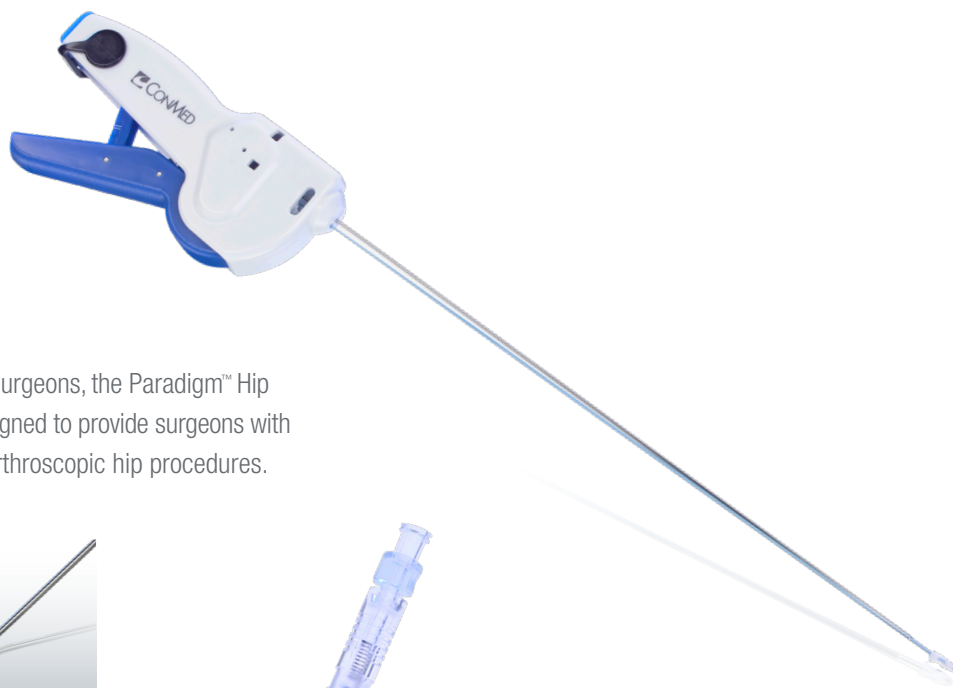
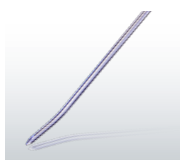
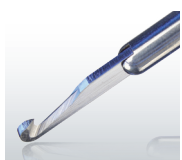




# Paradigm™ Hip System

Designed by some of the world's leading hip surgeons, the Paradigm™ Hip System is a complete portfolio of products designed to provide surgeons with simple, safe, and reproducible solutions for arthroscopic hip procedures.



Experience the Paradigm shift. Take the next step toward simple, safe, and efficient hip arthroscopy. Call **1-866-4CONMED** or visit [www.CONMED.com/Paradigm](http://www.CONMED.com/Paradigm) to learn more.



## Introducing a New Paradigm in Hip Arthroscopy

We don't have to tell you that hip arthroscopy is rigorous work. The anatomy of the hip joint makes easily and effectively accessing the surgical site a real challenge, while placing suture anchors as close to the articular cartilage as possible without penetrating the cartilage is no easy task.

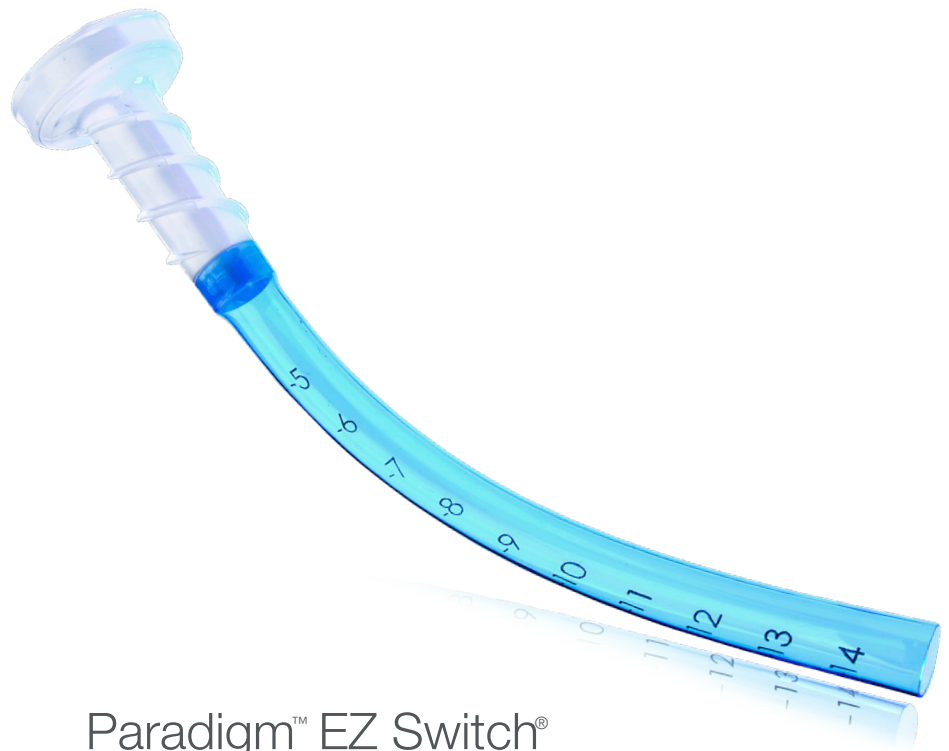
To solve this problem, hip surgeons needed a system that was revolutionary, not evolutionary. That's why we partnered with a team of some of the world's most renowned hip surgeons to address these challenges. We developed an innovative portfolio of products designed to be safe and efficient, while allowing you to perform arthroscopic hip repairs like never before.

*This isn't just a new hip system, it's a new paradigm in Hip Arthroscopy.*

### Table of Contents

Access .....	4-6
Labral Repair .....	7-9
Suture Passing .....	10-11
Resection .....	12-13
Ablation.....	14
Manual Instruments .....	15

PARADIGM™  
HIP  
SYSTEM



PARADIGM™  
HIP  
SYSTEM

## Paradigm™ EZ Switch® Portal Saver

Say goodbye to sleds, switching sticks, and rigid motion-restricting cannulas. The innovative EZ Switch® Portal Saver is flexible to allow for a wide range of motion, while enabling surgeons to easily and efficiently switch portals.

- **Designed to Save Time** Easily switch portals without sleds or switching sticks.
- **Flexible Design** Allows for a wide range of motion.
- **Customizable** Flexible body length can be easily trimmed to match patient anatomy.
- **Optimal Access** Up to 150mm working length designed to enable easy access to the surgical site.
- **30mm threads** Designed to provide strong dermal fixation.
- **8.5mm inner diameter** Designed to fit CONMED instruments such as curved burs, suture passers, and curved drill guides.\*

Paradigm™ EZ Switch® Portal Saver PEZS04

\* User inserting non-CONMED products should exercise caution as some non-CONMED products may cause damage to the device. See IFU for more details.

## Paradigm™ Tactile Needle

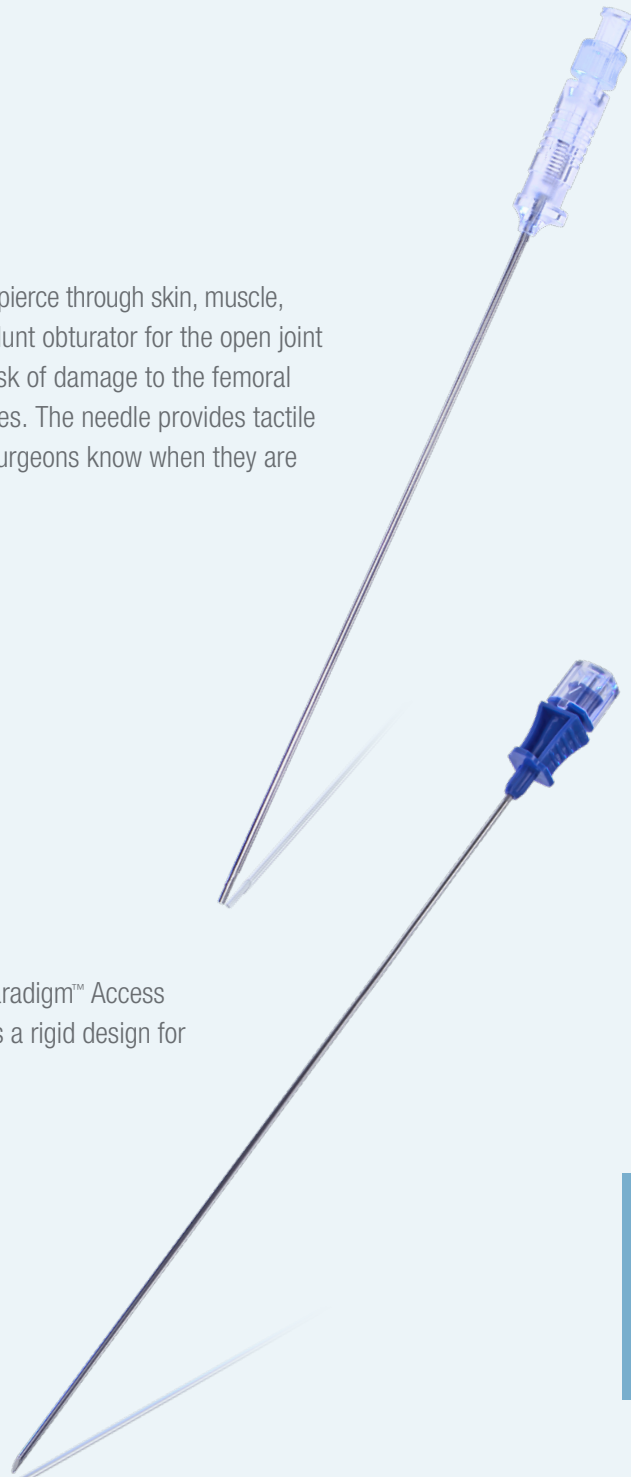
Engineered for safety, this needle is sharp to pierce through skin, muscle, and capsule, yet features a spring-loaded blunt obturator for the open joint space that is designed to help reduce the risk of damage to the femoral head, cartilage, labrum, and other soft tissues. The needle provides tactile feedback to confirm capsule entry so that surgeons know when they are safely in open space.

Paradigm™ Tactile Access Kit and PEZS03A  
EZ Switch™ Portal Saver System

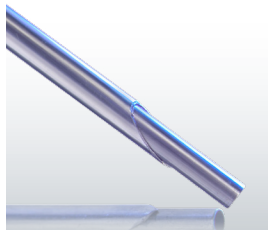
## Paradigm™ Access Needle

Designed to easily penetrate the capsule, Paradigm™ Access Needles feature a sharp 21° bevel as well as a rigid design for better maneuvering.

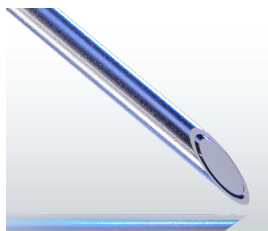
Paradigm™ Access Kit and PEZS02A  
EZ Switch™ Portal Saver System



PARADIGM™  
HIP  
SYSTEM



TACTILE NEEDLE



ACCESS NEEDLE

## Convenient All-In-One Kits

Paradigm™ Hip Access Instruments are available in several kit configurations to meet the needs of your technique and your facility.

### **Paradigm™ EZ Switch™ Portal Saver System**

- (1) Cannulated Obturator
- (1) Reference Tool
- (2) Paradigm™ EZ Switch™ Portal Savers

Paradigm™ EZ Switch™ Portal Saver System PEZS01A

### **Paradigm™ Access Kit and EZ Switch™ Portal Saver System**

- (1) Cannulated Obturator
- (1) Reference Tool
- (2) Paradigm™ EZ Switch™ Portal Savers
- (2) Paradigm™ Access Needles
- (2) Guide Wires

Paradigm™ Access Kit and EZ Switch™ Portal Saver System PEZS02A

### **Paradigm™ Tactile Access Kit and EZ Switch™ Portal Saver System**

- (1) Cannulated Obturator
- (1) Reference Tool
- (2) Paradigm™ EZ Switch™ Portal Savers
- (1) Paradigm™ Tactile Needle
- (1) Paradigm™ Access Needle
- (2) Guide Wires

Paradigm™ Tactile Access Kit and EZ Switch™ Portal Saver System PEZS03A

# Paradigm™

## Retractable Straight and Hook Blades

Featuring surgeon-designed ergonomic handles, both the Paradigm™ Retractable Straight Blade and Hook Blades\* are designed for safety. They feature retractable sheaths that allow surgeons to safely probe with the blunt, sheathed tip and then pull the lever to reveal the sharp blade when it is time to cut.

Paradigm™ Retractable Blade, Straight      PRBS  
Paradigm™ Retractable Blade, Hook      PRBH



RETRACTABLE  
STRAIGHT AND HOOK  
BLADES



Paradigm™ ClickLok™  
All-Suture Anchors



PressFT® Flex &  
GENESYS™ PressFT® Flex\*  
Suture Anchors



PopLok®  
Knotless Suture Anchors

# For Labral Fixation, Take Your Pick.

We have a solution to suit your technique.

\* Not released in all regions

# Paradigm™ ClickLok™ All-Suture Anchor System

Designed by world-leading hip surgeons, ClickLok™ offers the simplicity and reliability you deserve.



## Stay in Control with One-Handed Deployment

An innovative delivery system combined with a unique deployment technique enables one-handed deployment. This seamless anchor insertion process eliminates the need to pass control of your scope.

### Simple

- Curved delivery system facilitates easy access to the acetabular rim for ideal anchor placement
- Funneled drill guide helps the drill easily and quickly find its insertion point
- Fluted drill bit designed to evacuate bone more efficiently from the tunnel
- Positive stop instrumentation for simple confirmation drill depth is achieved

### Reliable

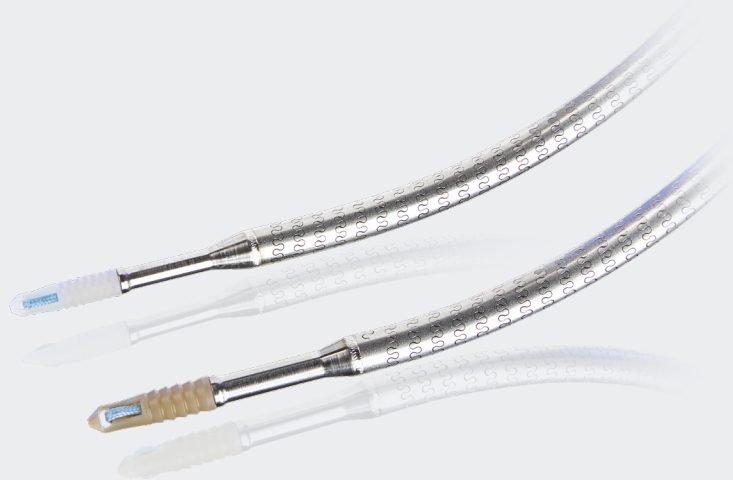
The patented mechanical deployment mechanism ensures consistent and secure fixation, with an audible indicator that confirms final deployment.

### Bone Sparing

The 1.8mm ClickLok™ provides secure fixation with a minimal footprint, helping preserve crucial bone around the acetabular rim.

Paradigm™ ClickLok™ Anchor, Blue #2 Suture	PASA01
Paradigm™ ClickLok™ Anchor, Black #2 Suture	PASA02
Paradigm™ ClickLok™ Drill Bit, 2.1mm	PASDB
Paradigm™ ClickLok™ Drill Guide, Straight Crown	PASG01A
Paradigm™ ClickLok™ Drill Guide, Straight Fish Mouth	PASG02A
Paradigm™ ClickLok™ Drill Guide, Curved Crown	PASCG01A
Paradigm™ ClickLok™ Drill Guide Obturator	PASGB01A





## PressFT® Flex and GENESYS™ PressFT® Flex\* Suture Anchors

For surgeons who need strong fixation in a small footprint, PressFT® Flex Suture Anchors combine a small size with exceptional strength. Now available with a curved delivery system, PressFT® Flex and GENESYS™ PressFT® Flex are specifically designed for hip arthroscopy. Single-loaded with Hi-Fi® suture, PressFT® Flex anchors are available in both PEEK and GENESYS™ Biocomposite material.

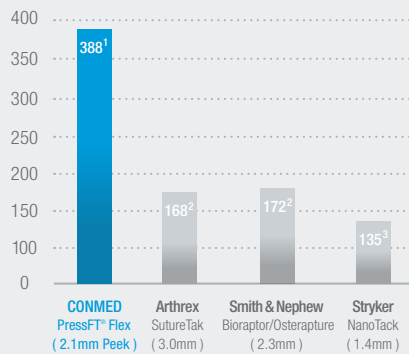
**STRONG:** Exceptional anchor strength with a pull-out force up to 388N<sup>1</sup>

**SMALL:** 2.1mm and 2.6mm footprint

**CURVED DELIVERY:** Enables ideal anchor placement around the acetabular rim

### ▶ PressFT® Flex Anchors

Pullout Strength (N)<sup>1</sup>  
Pullout in Porcine  
Cortical Bone



GENESYS™ PressFT® Flex, 2.1mm, Biocomposite Anchor	CNB211H
GENESYS™ PressFT® Flex, 2.6mm, Biocomposite Anchor	CNB261H
PressFT® Flex, 2.1mm, PEEK Anchor	CNP211H
PressFT® Flex, 2.6mm, PEEK Anchor	CNP261H
PressFT® Flex Straight Drill Guide, Hip	CPGHS
PressFT® Flex Curved Drill Guide, Hip	CPGHC
PressFT® Flex Obturator, Hip	CPCOH
PressFT® Flex Drill Bit, 2.1mm, Hip	CD21H
PressFT® Flex Drill Bit, 2.6mm, Hip	CD26H

PARADIGM™  
HIP  
SYSTEM

\* Not available in all regions. <sup>1</sup>PDD1444516 for BIO anchors and PDD1444517 for PEEK anchors.

<sup>2</sup> Barber, FA. Et al. Suture Anchor Materials, Eyelets, and Designs: 2008 Update. *Arthroscopy*. 2008;24: 895-867. <sup>3</sup>Data on file; PDD1465642.

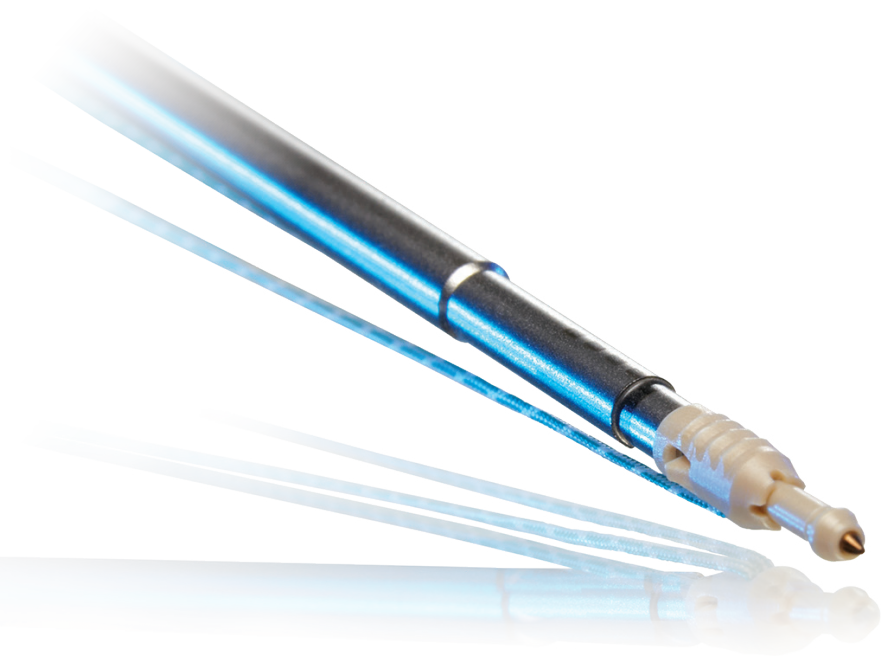
PARADIGM™  
HIP  
SYSTEM

## PopLok® Knotless Suture Anchors

The all-PEEK PopLok® Knotless Suture Anchors provide reliable and reproducible soft tissue fixation for hip arthroscopy. The unique suture locking mechanism traps suture within the anchor, resulting in dependable fixation.

The PopLok® Knotless Suture Anchor also has the ability to tension the suture after the anchor is seated in the pilot hole. When the anchor is “popped,” the wings are deployed subcortically to provide secure fixation in the hard cortical bone of the acetabulum.

2.8mm PopLok® w/one #2 Hi-Fi® Suture	GKP-2801
3.3mm PopLok® w/one #2 Hi-Fi® Suture	GKP-3301
PopLok® 2.8/3.3mm Drill Bit	BKL-00M
PopLok® Guide	BGU-00M
PopLok® Obturator	BTR-00M





## Paradigm™ Slim Raven™ Suture Passer

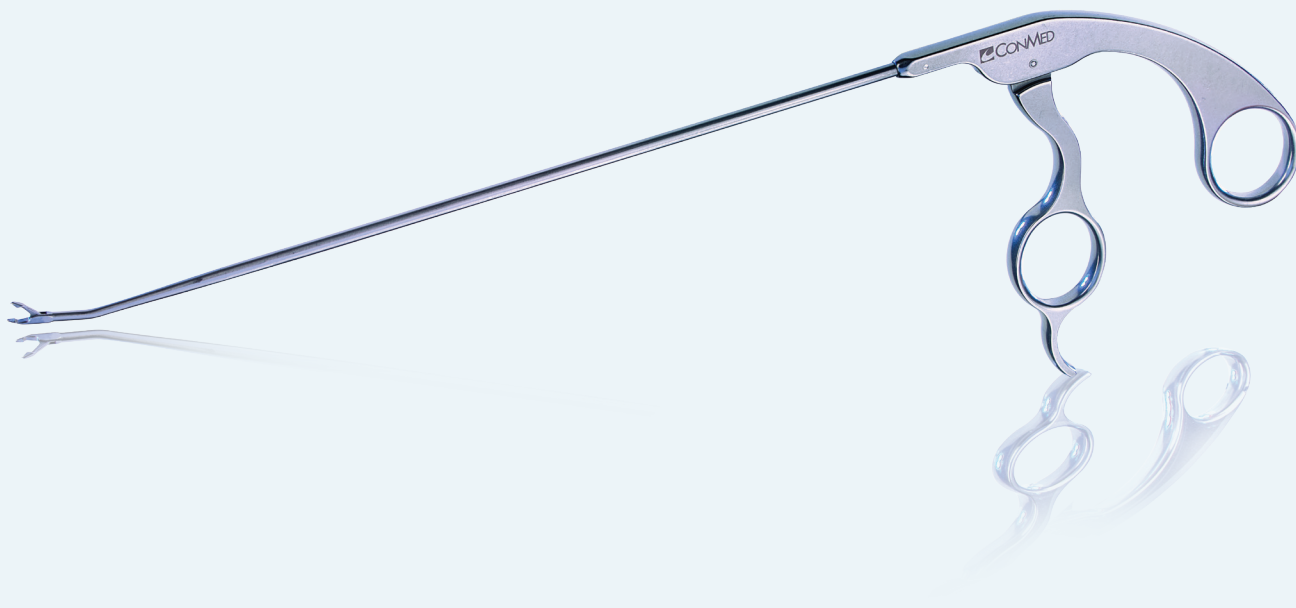
For traditional suture passing, the Slim Raven™ Suture Passer's sharp tip and low-profile jaws easily pass and retrieve suture with minimal disruption to the labrum. The 15° upward angle provides accurate suture passing in the tight hip joint.

Paradigm™ Slim Raven™ Suture Passer, 15° up PGU700



PARADIGM™ SLIM RAVEN™

PARADIGM™  
HIP  
SYSTEM



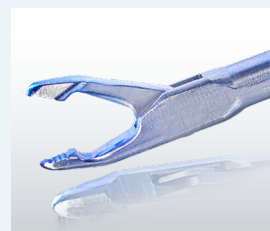
## Paradigm™ Slim™ Suture Retriever

Allowing the sutures to easily slide through the jaws for effective retrieval, this manual suture retrieving device features a 15° upward angle that provides accurate suture passing in the tight hip joint.

Paradigm™ Slim™ Suture Retriever, 15° up

PGU701

PARADIGM™  
HIP  
SYSTEM



PARADIGM™ SLIM™  
SUTURE RETRIEVER

PARADIGM™  
HIP  
SYSTEM



## Signature Series™ Blades and Burs

A first of their kind, the Signature Series™ hip blades and burs are designed exclusively for use in the hip joint. The durable materials and procedure-specific designs enable more effective reshaping of the anatomy of the hip.

Improved access is also achieved with the unique curved burs. These hip specific tools were designed to reach around the femoral neck for more precise resection. The 5.5mm and 6.0mm burs feature an optimized flute design enabling cutting at the distal tip. The larger sizes improve debridement efficiency.

### Blades

Cuda® - 30° Bend	4.2mm	EL9356
Sterling® Great White®	4.2mm	9299A
Sterling Ultracut®	4.2mm	C9405A

### Burs

Pre-bent Oval Bur	4.0mm	HPS-HB03
Pre-bent Oval Bur	6.0mm	HPS-HB13
Pre-bent Spherical Bur	5.5mm	HPS-HB11
Pre-bent Polishing Bur	5.5mm	HPS-HB12

*Additional listing of Signature Series® Blades and Burs are available.*

## Pre-Bent Lanza® Tapered Specialty Shaver Blade

CONMED's Lanza® Tapered Specialty Shaver Blade has a tapered distal tip, smooth cutting profile, and dual-inner cutting window that is designed for precise, efficient resection in tight anatomical spaces and sensitive areas.

The Lanza is pre-bent 15° and available in a length that is optimal for hip arthroscopy.

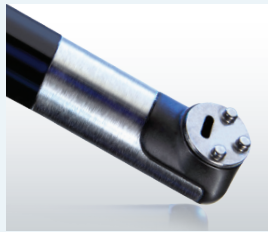
Pre-bent Lanza® – 15°     HPS-CB09



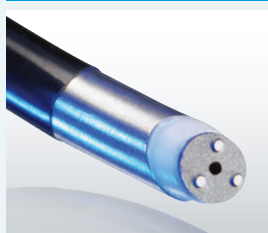
PARADIGM™  
HIP  
SYSTEM



TAPERED TIP



EDGE® 90° PROBE



EDGE® 50° PROBE

## Edge® Extended Length Probes for Hip Arthroscopy

Compatible with CONMED's Edge® Bipolar Arthroscopic RF System, the Edge® 50° and 90° probes are available in the extended 18cm length to provide convenient access for hip procedures. The versatile design is intended to provide bulk volumetric soft tissue ablation with the face of the electrode or plasma layer as well as fine tune sculpting work with the edge of the electrode or plasma layer.

Edge® probes feature a unique one-piece tungsten electrode designed to reduce the risk of probe degradation,<sup>4</sup> allowing surgeons to aggressively and safely remove bulk tissue.

### EDGE® Arthroscopic Energy Bipolar Probes

Arthroscopic Energy 90° Probe with Suction, Extended Length	AES-90SL
Arthroscopic Energy 50° Probe with Suction, Extended Length	AES-50SL

### EDGE® Arthroscopic Energy Capital Equipment

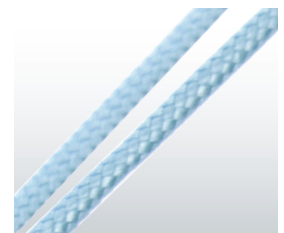
Arthroscopic Energy Generator	AES-1
Arthroscopic Energy Wireless Ablation/Resection Foot Pedal	W2000D
Arthroscopic Energy Foot Control	AES-FC
Arthroscopic Energy Wireless Foot Control	AES-WFC

*Additional Edge® accessories are available.*

## Paradigm™ Curved Knot Pusher

Currently the only curved knot pusher available,<sup>5</sup> the Paradigm™ Curved Knot Pusher is designed to simplify and streamline hip arthroscopy procedures. It features an anatomic curved design that is intended to simplify knot-tying in hard to reach places and optimize precise knot stack placement around the acetabular rim.

Paradigm™ Curved Knot Pusher      PCKP



SIMPLIFIED KNOT-TYING

<sup>5</sup> Compared to other large hip arthroscopy companies.





## Paradigm™ Hip System

11311 Concept Blvd  
Largo, FL 33773

Toll Free: 1-866-4CONMED  
International: 727-214-3000  
[www.CONMED.com](http://www.CONMED.com)

[customerexperience@CONMED.com](mailto:customerexperience@CONMED.com)  
[internationalorders@CONMED.com](mailto:internationalorders@CONMED.com)



Comprised of PEEK-OPTIMA® polymer from Invivo® Biomaterial Solutions. PEEK-OPTIMA® and Invivo® are registered trademarks of Invivo Ltd. All Rights are Reserved.