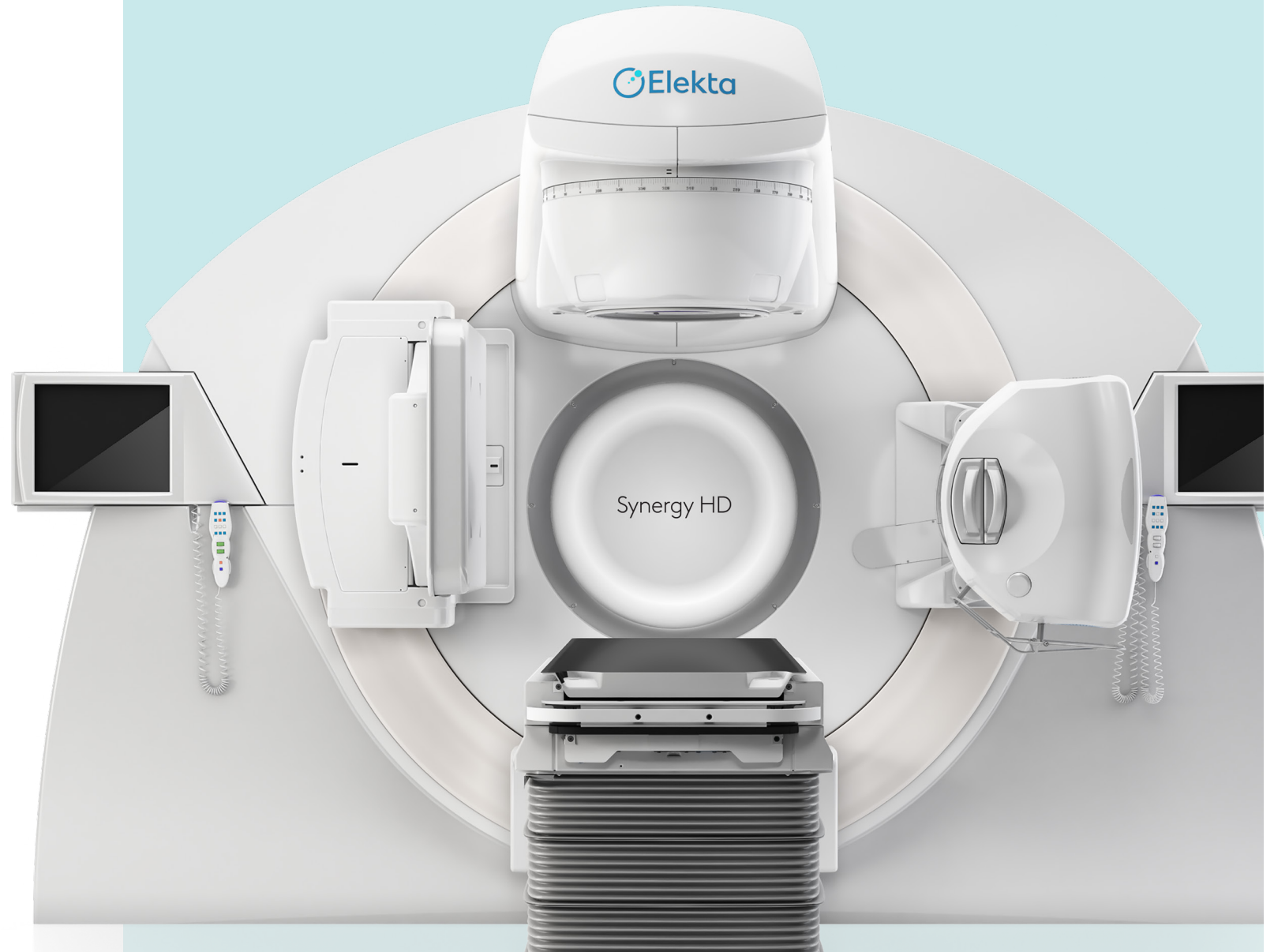


# Elekta Synergy<sup>®</sup>

Proven technology,  
for everyone,  
everywhere

 Elekta



Elekta Synergy

Proven technology, for everyone, everywhere

# Inspires confidence

We designed Elekta Synergy® to be a simple and accessible radiation therapy solution. And that's what it has proven to be—reliable image-guidance technology to provide confidence in simple or complex treatment for everyone, everywhere.

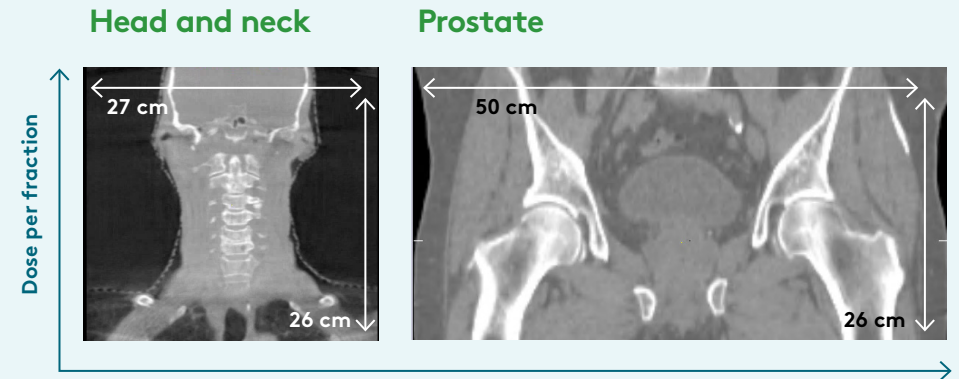
## Synergy is a trusted solution worldwide.

- Close to 2,000 systems are in clinical use in over 70 countries
- Synergy enables over 150 new sites access to modern radiation therapy every year
- Over 1 million cancer patients are treated annually through Synergy treatments

## Achieve fast and accurate treatments with advanced imaging and beam-shaping.

- 2D MV and 3D volumetric kV imaging allows clear visualization and quick registration for confident treatments
- Low leaf transmission protects organs-at-risk (OAR), while advanced beam shaping enables conformal dose distribution and interdigitation across full field for dynamic treatments
- Dynamic treatments can be completed in less time giving you greater patient capacity and throughput

## Largest IGRT field of view



See more relevant anatomy without the needs for double scanning and image stitching

## Full field of view enables confident treatment of simple or complex indications.

- The Synergy system's 50 cm x 26 cm largest field of view is unparalleled
- See more anatomy—15% larger dynamic field size than other systems visualizes critical anatomical information to support clinical decisions at the time of treatment\*

## Synergy complete solution enables you to plan and deliver with accuracy.

- MOSAIQ® oncology information and treatment management system simplifies the entire workflow and empowers clinical decisions
- Monaco® treatment planning system with Monte-Carlo gold standard accuracy ensures you deliver what you planned

\*Data on file

# Simple and reliable

Providing you with sustainable technology is just the start. We back this up with comprehensive training to get you up and running fast and keep your staff current. Remote 24/7 support keeps you operational.

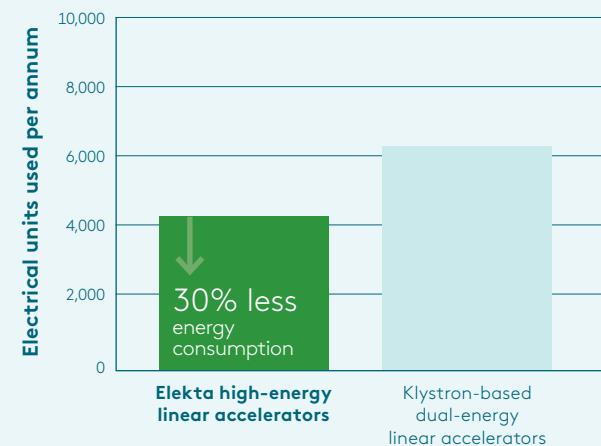
## Stay current.

- Enhance clinical practices with Elekta Care™ comprehensive training and education programs
- Attend state-of-the-art innovative global training centers
- Access eLearning, classroom and clinical learning events
- Participate in advanced application, technical and service training

## Stay working.

- Elekta IntelliMax® remote system supports you constantly
- Synergy system status and performance are monitored in real time
- Reduce maintenance costs and ensure operational efficiency, as many issues can be resolved remotely
- Predictive maintenance of potential problems optimizes your system uptime

## Green Beam Technology



## Stay cost-effective.

- The Synergy system's eco-friendly Green Beam Technology means cost-effective operation
- The digital linac uses approximately 30% less energy than other typical high-energy systems\*
- The technology reduces your carbon emissions
- The system provides efficient running cost

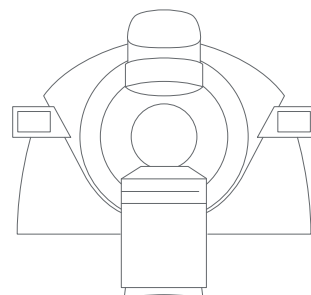
\*Data on file

Only **Elekta Synergy** delivers such simplicity and reliability, to give you the confidence to do more for your patients.

# Builds a foundation for your future

At Elekta, we believe in delivering a radiotherapy solution that is scalable. So we've designed Synergy for the needs of growing clinical practices, with technologies that can support you to deliver simple or sophisticated treatment regimens.

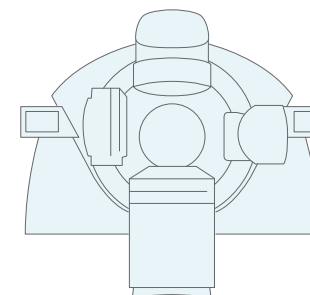
## Synergy Upgrade Path



### Synergy



Wide range of photon and electron energies



### Synergy HD



kV Volumetric Image Guidance

#### Unlock advanced clinical capabilities with IntelliBeam.

- Single or multiple radiation beams sweep in uninterrupted arcs around the patient
- High modulated dose is delivered to tumor target(s) with less danger to surrounding tissue
- Treatment times are dramatically reduced, giving you greater patient comfort and capacity



#### Elekta IntelliBeam

Intelligent, high-definition, high-speed treatments



#### SureStart

Fast start-up and optimized performance



#### MOSAIQ® Plaza

Enhanced workflow efficiency and user experience

# Rest assured— you've got **Elekta Care.**



## Elekta Care™ provides ongoing support to ensure optimum system uptime

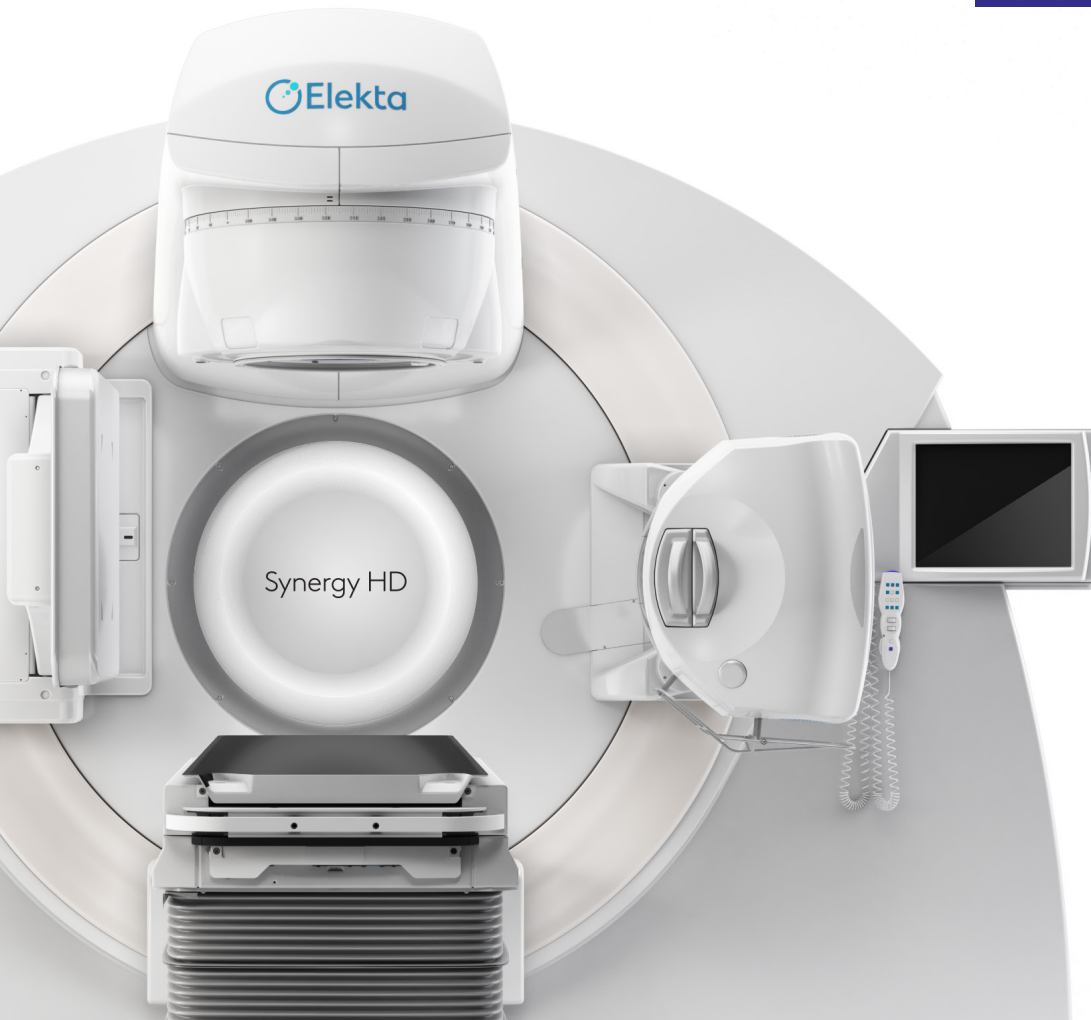
- Our commitment to your customer care combines unrivaled professional support with state-of-the-art technical services
- We get you up and running quickly—and keep you that way
- 24/7 system support, lifetime learning opportunities and peer-to-peer knowledge sharing



For confidence in a system that is simple and reliable—a foundation for your future growth—**Synergy is all you need.**

**Elekta Synergy**  
Proven technology, for everyone, everywhere

# Inspires confidence



“The delivery of Elekta Synergy is an extraordinary achievement—patients are now able to receive treatment for a variety of cancers such as breast cancer right through to skin cancer, cervical cancer and prostate cancer.”

**Jennifer Fuller, Regional Business Manager**  
Medical Specialist Holdings

**Article:** Northern Cape Receives First Radiotherapy System, by Terri Chowles, eHealth News, South Africa

## is simple and reliable

“In my opinion, Elekta has led the way in image guidance in radiation therapy. It was the first to introduce image guidance with the Elekta Synergy and the company does it better than any other provider—and that goes for software integration as well.”

**Lane R. Rosen, Radiation Oncologist**  
Willis-Knighton Cancer Centre





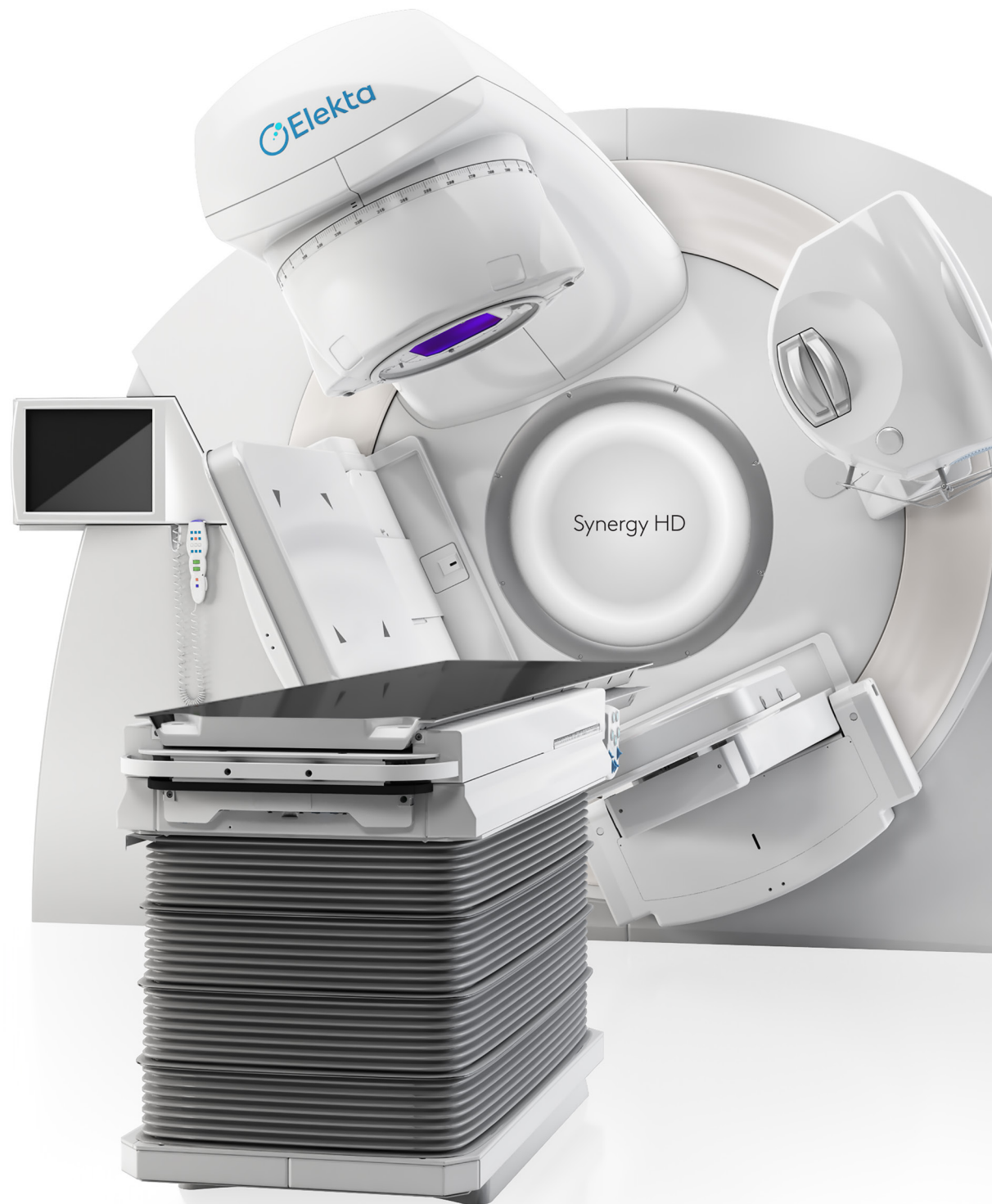
---

# and builds a foundation for your future

“The original Synergy systems essentially brought radiation therapy capabilities to New South Wales where none existed before. Their upgrade with...advanced imaging tools, in addition to Monaco planning, has really brought the districts’ radiotherapy services to world-class cancer care and is an investment for the future.”

**Stuart Greenham, Radiation Therapy Manager**

Mid North Coast Local Health District, New South Wales, Australia



**For almost five decades, Elekta has been a leader in precision radiation medicine.**

**Our nearly 4,000 employees worldwide are committed to ensuring everyone in the world with cancer has access to—and benefits from—more precise, personalized radiotherapy treatments.**



**Elekta AB**

Box 7593  
SE-103 93  
Stockholm, Sweden

T +46 8 587 254 00  
F +46 8 587 255 00

**Europe, Middle East, Africa**

T +46 8 587 254 00  
F +46 8 587 255 00

**North America**

T +1 770 300 9725  
F +1 770 448 6338

**Latin America, South America**

T +55 11 5054 4550  
F +55 11 5054 4568

**Asia Pacific**

T +852 2891 2208  
F +852 2575 7133

**Japan**

T +81 3 6722 3800  
F +81 3 6436 4231

**China**

T +86 10 5669 2800  
F +86 10 5669 2900



LPCCSYN190102  
© 2019 Elekta AB (publ.) All mentioned trademarks and registered trademarks are the property of the Elekta Group. All rights reserved. No part of this document may be reproduced in any form without written permission from the copyright holder.