

# Getinge Assured

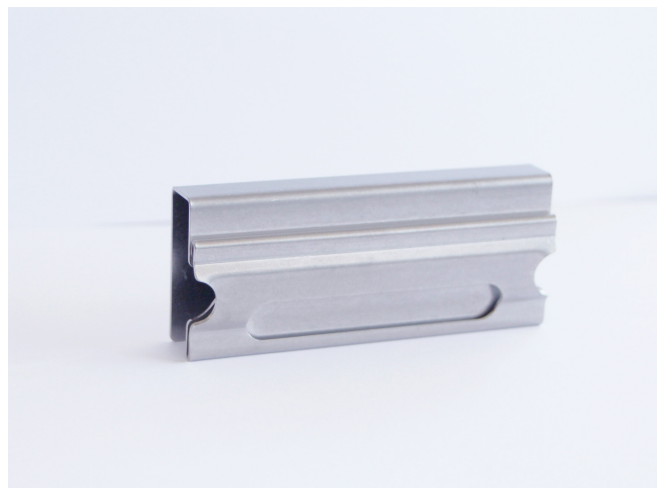
## Wash Monitor Holder

The Holder for the Getinge Assured Wash Monitor and Getinge Assured Wash Monitor U is an auxiliary device for routine monitoring of automated wash processes in washer disinfectors and ultrasonic washers.

The Wash Monitor Holder should only be used with the Wash Monitor (in the washer-disinfector) or the Wash Monitor U (in the ultrasonic washer). The Wash Monitor or Wash Monitor U is inserted into the Wash Monitor Holder, simulating a contaminated surgical instrument.

### Performance Characteristics

The Wash Monitor is inserted into the holder so that half of the test soil is obscured and the other half exposed. The Wash Monitor U is inserted into the holder so that the test soil is fully exposed. The Wash Monitor holder should be placed face up inside the washer-disinfector. Run a cleaning cycle according to the manufacturer's recommendations. After the wash cycle is complete, results of the cleaning efficacy are displayed on the Wash Monitor and Wash Monitor U. The removal of all test soil indicates effective cleaning.



### Physical Characteristics

The Wash Monitor holder is made of polished stainless steel.

- **Dimensions:** 89 mm X 38 mm X 15 mm
- **Weight:** 70 g
- **Substrate Material:** Electro polished stainless steel AISI 304

### Shelf Life

Not applicable.

### Ordering Information

**Getinge Assured**

Wash Monitor Holder

**Order Number**

503864800