

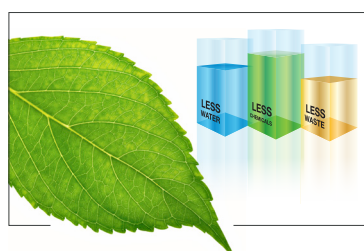
FLUSHER DISINFECTOR RANGE

# Tornado™



The excellent cleaning and disinfection performance of Tornado has made it a well-established flusher disinfectant for hospitals and nursing homes, operating reliably and efficiently in sluice rooms around the world.

The Tornado product range includes free standing and under counter models for different installation demands. The Tornado range with its unique design, together with various features and options enhance the hygiene routines and infection control - in prevention of Health Care Associated infections.



Reduced  
environmental  
footprint

# Key features



### FLEXIBLE DESIGN

The new standard casing is made of colourful polymeric material, offering an attractive, modern design. Every model is fitted with a stainless steel chamber, so *Tornado* can be made available as an all stainless steel model upon request.



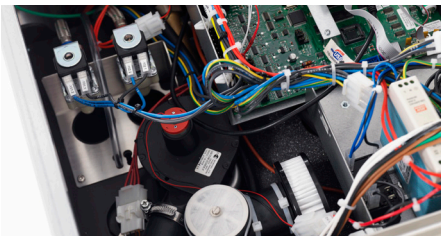
### A<sub>0</sub> VALUE AND CONTROL

The A<sub>0</sub> value can be set to 60 or 600 for greater efficacy against more heat resistant microorganisms. The disinfection phase can also be controlled by either time and temperature, or by the chosen A<sub>0</sub> value to further shorten the cycle time.



### PROCESS RECORD

Many healthcare facilities are moving towards greater reportability with detailed records of disinfection operations. *Tornado* provides the option to record and track process operations via a printer or USB device.



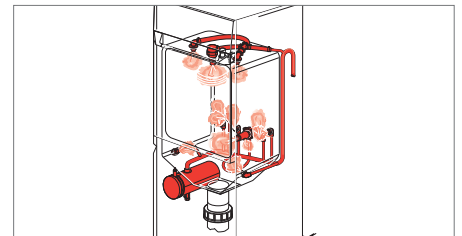
### COOLING FAN

Receptacles are rapidly cooled in the most hygienic way using HEPA-filtered (H13) air. Cool receptacles are delivered at the end of the cycle, improving staff safety and and improving quality.



### AUTOMATIC DOOR FUNCTION

To support hygienic non-contact routines, *Tornado* has an option for an automatic door activated by an IR sensor. To improve choice in automatic door operation, a foot pedal option can also be selected.



### PIPE SYSTEM DISINFECTION (PSD)

Rapid disinfection through all fixed and rotating nozzles also delivers a unique benefit as the entire pipe and nozzle system is disinfected in every cycle, eliminating the risk of contamination

PRODUCT INFORMATION		
Model	Free standing	Under counter
Measurements	450 x 580 x 1320mm (17 <sup>1</sup> / <sub>16</sub> x 22 <sup>3</sup> / <sub>4</sub> x 51 <sup>7</sup> / <sub>16</sub> " )	900 x 620 x 870mm (17 <sup>1</sup> / <sub>16</sub> x 22 <sup>3</sup> / <sub>4</sub> x 51 <sup>7</sup> / <sub>16</sub> " )
Weight	100 kg (220 lbs)	120 kg (265 lbs)
Noise level	53 dB (A) accordingly to EN ISO 3747:2000	
Max. external temperature	40° C (100° F)	
Electrical connection	Contact your Arjo representative	
Electrical Consumption	0,16 kWh/cycle	
Water Consumption	Economy 11 liters/cycle ±10% Normal 18 liters/cycle ±10% Intensive 25 liters/cycle ±10%	
Water Connection (Cold & hot water)	Pressure 1-8 Bar (14-116 PSI) 15 mm (1/2"), Rate of flow >0,3 l/s	
Drain Connection	Wall ø 90 mm or 110 mm (3 1/2" or 4 1/4") Floor ø 90 mm or 110 mm (3 1/2" or 4 1/4")	
Ingress Protection Rating (general)	IP22	
Option for Tornado FD1800/FD1810	IPX4	

TORNADO	FD1800	FD1805	FD1810
Free standing	✓	x	✓
Under counter	x	✓	x
Manual door	✓	✓	x
Automatic door	x	x	✓
Polymeric exterior	✓	x	✓
Stainless steel exterior	0	✓	0

0 = Option

Tablet indicates what is differentiating the product models

